

Druckreduzier-Ventil (230409 / 230410)

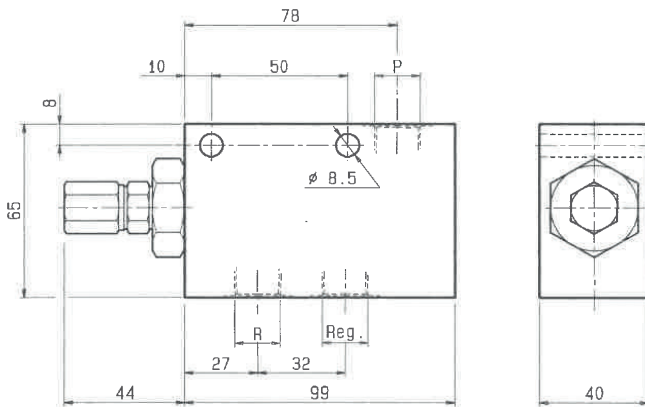


VRP-R

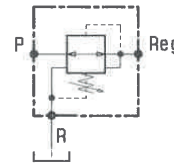
05.90.27 - X - Y - Z

DENOMINAZIONE VALVOLA
VALVE DENOMINATION

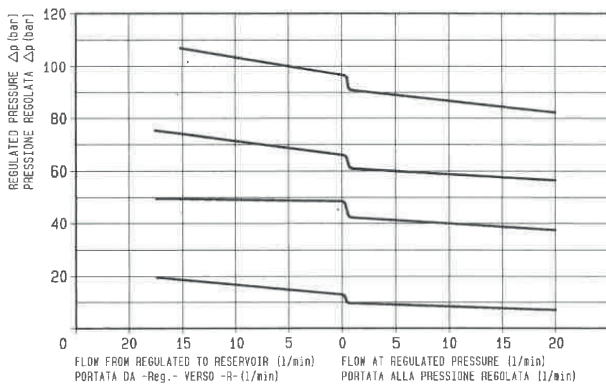
CODICE D'ORDINAZIONE
ORDERING CODE



These valves maintain the pressure in the secondary system lower than in the primary/inlet circuit. Direct acting, they incorporate a relief feature for the pressure peaks induced in the secondary system. Max leakage: 3 cc/min. at 90% of standard pressure setting. Fluid cleanliness class: 18/14 ISO 4406 (9 NAS-1638) or better.



Pressione di lavoro in entrata P: max 210 bar Pressione in uscita regolata: max 105 bar	Portata max 20 l/min.	Peso Kg 0,85
Max. inlet pressure 210 bar Max. regulated pressure 105 bar	Flow max 20 l/min.	Weight.Kg 0,85



X	REGOLAZIONI ADJUSTMENTS
03	vite interna esagono incassato leakproof inner hex. socket screw
04	volantino e controvolantino handknob and locknut

Z	MOLLE - SPRINGS				
	Campo taratura min-max bar Adj. press. range bar	Incremento pressione bar/giro vite Pressure increase bar/turn	Taratura standard bar (Q=5 l/1') Std.setting bar (made at 5 l/1')	Codice ordinazione Ordering code	Colore Colour
02	2-21	3	10		
04	2-42	5,3	20		
06	5-63	7,5	30		
10	5-105	13	50		

Y	ATTACCHI / PORT SIZE
	P - R - REG
02	3/8" BSPP