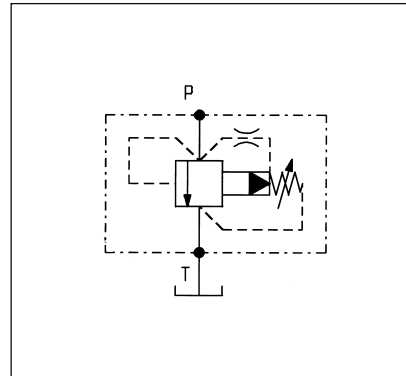
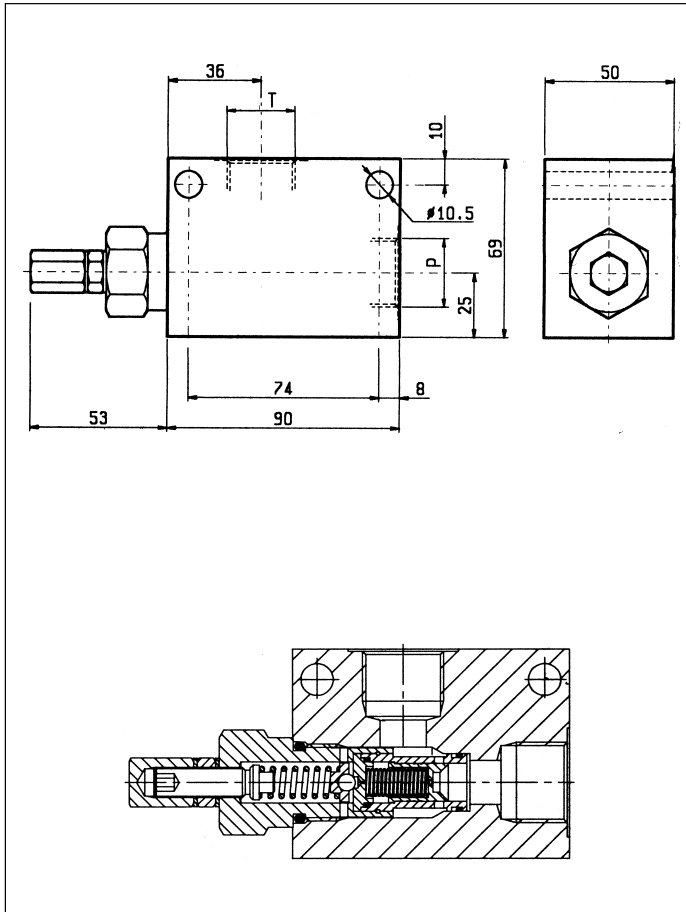


Druckbegrenzungsventile (230353) Limiteurs de pression

VSPC-150

05.11.05 - X - Y - Z



DATI TECNICI / TECHNICAL DATA

* Pressione di lavoro max. 350 bar
* Max. working pressure

Portata max. 150 l/min
Flow max.

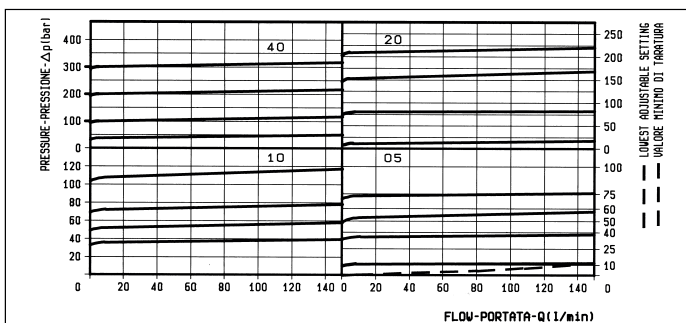
Peso 0.9 kg
Weight

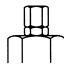
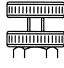

Trafilamento: circa 0,10 l/min alla massima pressione.
Leakage: 0.10 l/min approx at max relief setting.

Classe di pulizia dell'olio: almeno 18/14 ISO 4406 (9 NAS-1638).
Fluid cleanliness class: 18/14 ISO 4406 (9 NAS-1638) or better.

Utilizzabili in applicazioni in cui la pressione allo scarico "T" sia sempre inferiore alla pressione della linea "P".

Suitable for applications where pressure in the return line "T" never exceeds the pressure in the "P" line.



X	REGOLAZIONI ADJUSTMENTS
03	vite interna esagono incassato leakproof inner hex. socket screw 
04	volantino e predisposizione montaggio a pannello handknob and locknut panel mounting 
	cappello per piombatura sealing cap codice / ordering code 03.05.01.004 

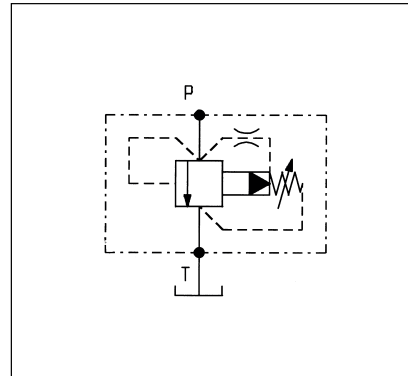
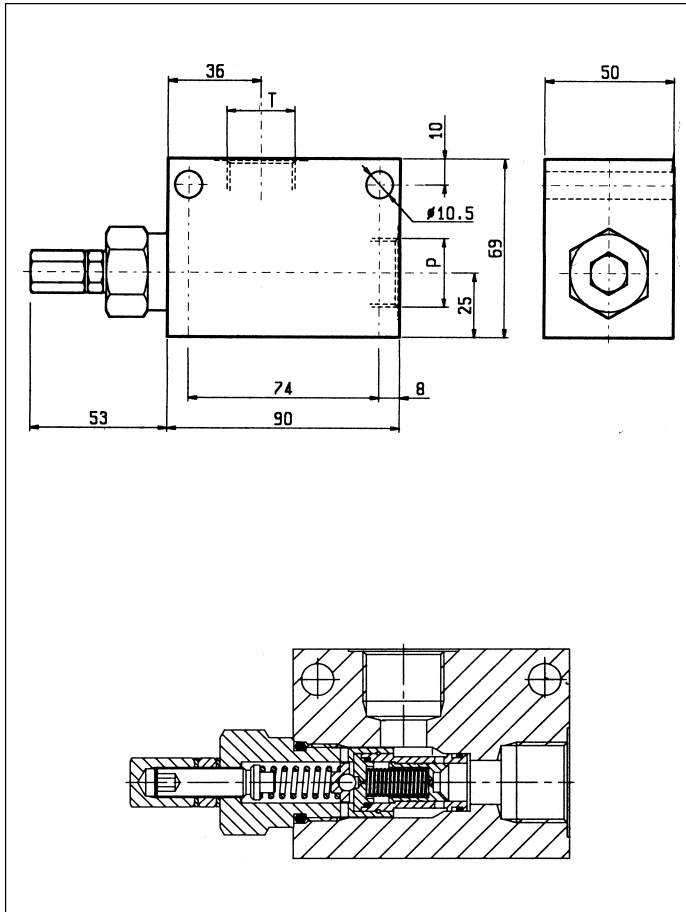
MOLLE / SPRINGS					
Z	Campo taratura min - max bar Adj. press. range bar	Incremento press. bar / giro vite Press. increase bar / turn	Taratura standard bar (Q = 5 l/min) Std. setting bar (made at 5 l/min)	Cod. ordinazione Ordering code	Colore Colour
05	1.7-70	20.5	50		nero black
10	7-105	26	100		blu blue
20	10-210	35	200		verde green
40	35-420 *	115	350		giallo yellow

Y		ATTACCHI / PORT SIZE
		P - T
03	G 1/2	
04	G 3/4	
05	G 1	

Druckbegrenzungsventile (230354) Limiteurs de pression

VSPC-150

05.11.05 - X - Y - Z



DATI TECNICI / TECHNICAL DATA

* Pressione di lavoro max. 350 bar
* Max. working pressure

Portata max. 150 l/min
Flow max.

Peso 0.9 kg
Weight

Trafilamento: circa 0,10 l/min alla massima pressione.

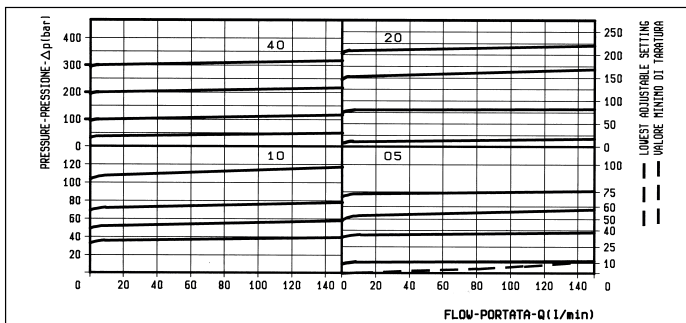
Leakage: 0.10 l/min approx at max relief setting.


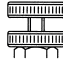

Classe di pulizia dell'olio: almeno 18/14 ISO 4406 (9 NAS-1638).

Fluid cleanliness class: 18/14 ISO 4406 (9 NAS-1638) or better.

Utilizzabili in applicazioni in cui la pressione allo scarico "T" sia sempre inferiore alla pressione della linea "P".

Suitable for applications where pressure in the return line "T" never exceeds the pressure in the "P" line.



X	REGOLAZIONI ADJUSTMENTS
03	vite interna esagono incassato leakproof inner hex. socket screw 
04	volantino e predisposizione montaggio a pannello handknob and locknut panel mounting 
	cappello per piombatura sealing cap codice / ordering code 03.05.01.004 

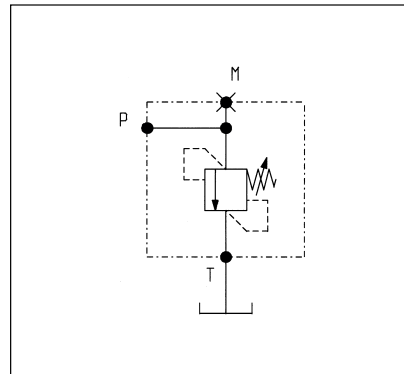
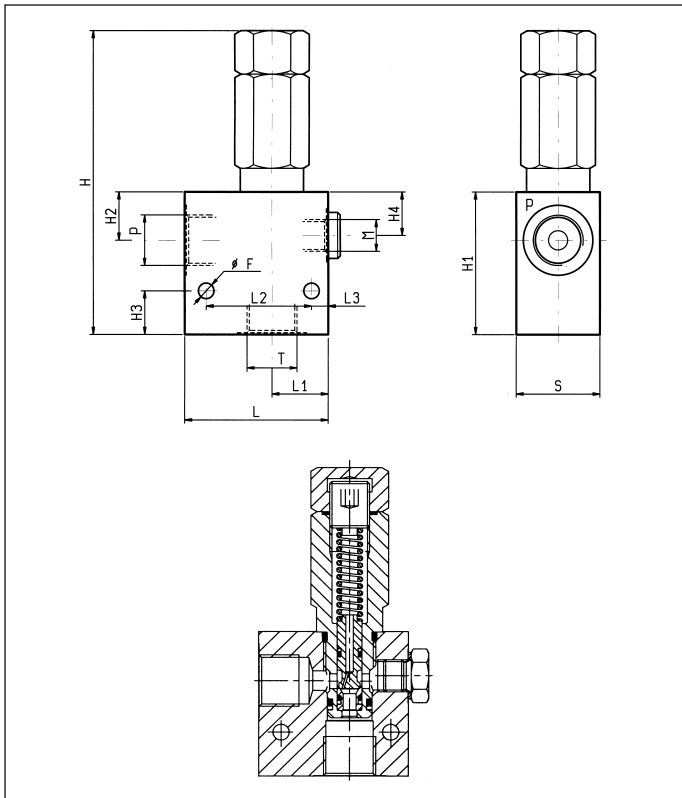
Z	MOLLE / SPRINGS				
	Campo taratura min - max bar Adj. press. range bar	Incremento press. bar / giro vite Press. increase bar / turn	Taratura standard bar (Q = 5 l/min) Std. setting bar (made at 5 l/min)	Cod. ordinazione Ordering code	Colore Colour
05	1.7-70	20.5	50		nero black
10	7-105	26	100		blu blue
20	10-210	35	200		verde green
40	35-420 *	115	350		giallo yellow

Y	ATTACCHI / PORT SIZE	
	P - T	
03	G 1/2	
04	G 3/4	
05	G 1	

Druckbegrenzungsventile (230355) Limiteurs de pression

VSDC-50

05.12.01 - X - Y - Z

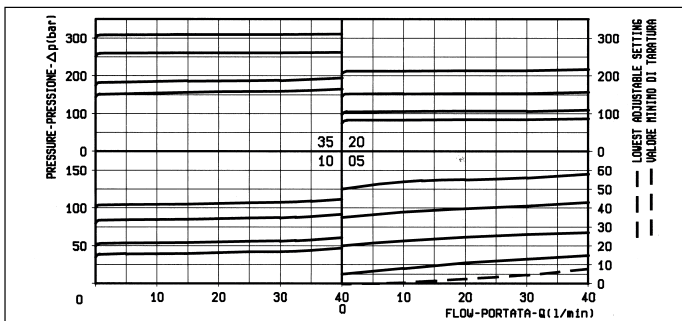


DATI TECNICI / TECHNICAL DATA

Pressione di lavoro max. 350 bar
Max. working pressure

Portata massima vedi diagramma
Flow see performance graph

35	8	44	30	60	18	18	20	59	126	6.5							1/2	0.62	
35	7	44	23.5	60	20	8	20	49	116	6.5								3/8	0.58
S	L3	L2	L1	L	H4	H3	H2	H1	H	F							Y	Peso kg Weight kg	



X	REGOLAZIONI ADJUSTMENTS	
03	vite esterna esagono incassato leakproof hex. socket screw	
	cappello per piombatura sealing cap codice / ordering code 03.05.01.001	

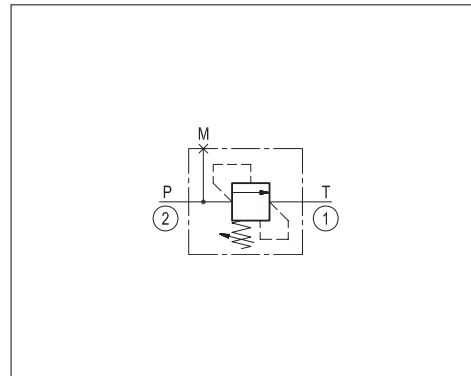
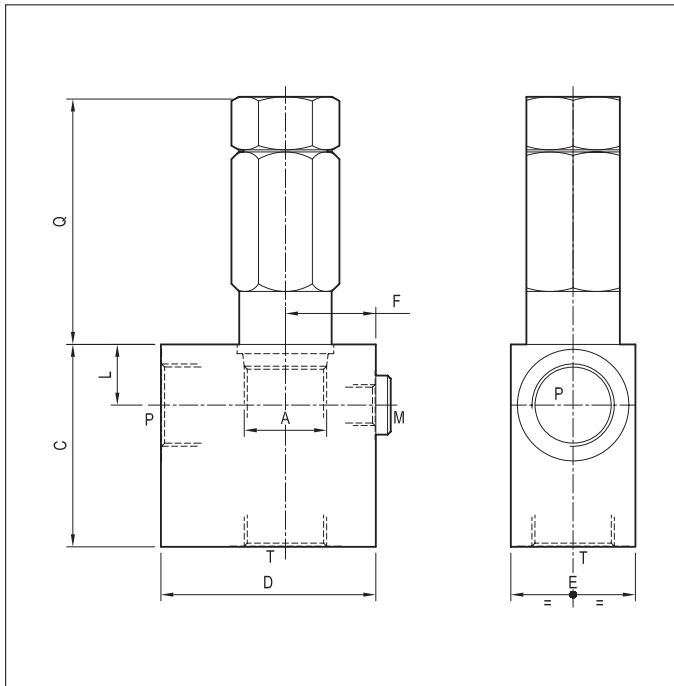
Z	MOLLE / SPRINGS				
	Campo taratura min - max bar Adj. press. range bar	Incremento press. bar / giro vite Press. increase bar / turn	Taratura standard bar (Q = 5 l/min) Std. setting bar (Q = 5 l/min)	Cod. ordinazione Ordering code	Colore Colour
05	5-50	15	50	03.51.01.077	nero black
10	30-100	30	100	03.51.01.076	blu blue
20	60-210	60	200	03.51.01.075	verde green
35	100-350	100	350	03.51.01.059	giallo yellow

Y	ATTACCHI / PORT SIZE	
	P-T	M
02	G 3/8	G 1/4
03	G 1/2	G 1/4

Druckbegrenzungsventile (231083) Limiteurs de pression

VSDC-150

05.12.02 - X - Y - Z



TECHNICAL DATA

Max flow: up to 150 l/min (40 gpm)

Max operating pressure: 210 bar (3000 psi)

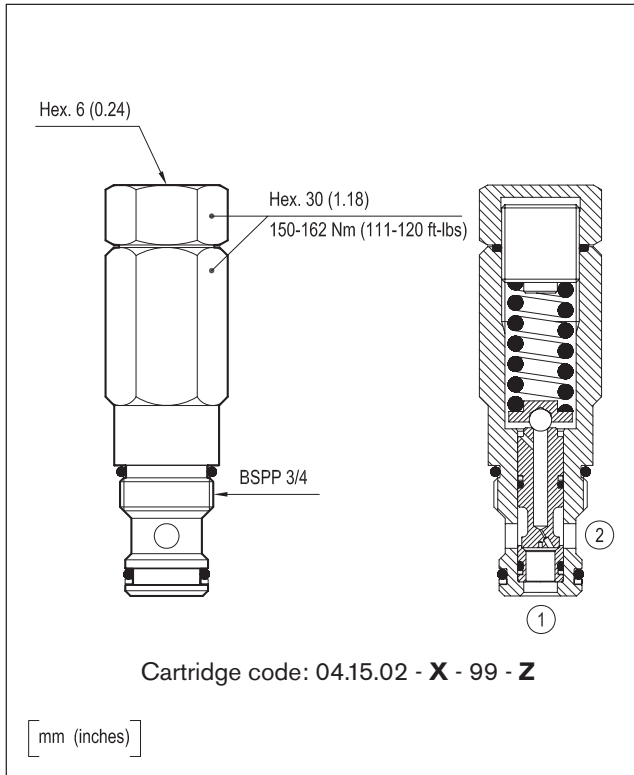
Standard manifolds in high strength **aluminium**.
For working pressure up to 350 bar (5000 psi) and for fatigue applications with any working pressure, steel manifolds are available upon request.

X See next page

Special Cavity	Y	PORT SIZE		DIMENSIONS mm (Inches)															
		P-T	M	C	D	E	F	G	H	I	L	M	N	O	Q	R	S		
A	03	G 1/2	G 1/4	65 (2.56)	69 (2.72)	40 (1.58)	29 (1.14)								19.5 (0.77)			79 (3.11)	
	04	G 3/4	G 1/4	65 (2.56)	69 (2.72)	40 (1.58)	29 (1.14)								19.5 (0.77)			79 (3.11)	
005																			

Z	SPRINGS				
	Adjust pressure range bar (psi)	Pressure increase bar (psi)	Standard setting bar (psi) Q = 5 l/min	Ordering code	Colour
05	5-50 (75-725)	16 (232)	50 (725)	03.51.01.150	black
10	40-100 (580-1450)	33 (479)	100 (1450)	03.51.01.151	blue
20	70-210 (1000-3000)	68 (986)	200 (2900)	03.51.01.152	green
35	130-350 (1900-5000)	105 (1523)	350 (5000)	03.51.01.142	yellow

Druckbegrenzungsventile (231083) Limiteurs de pression

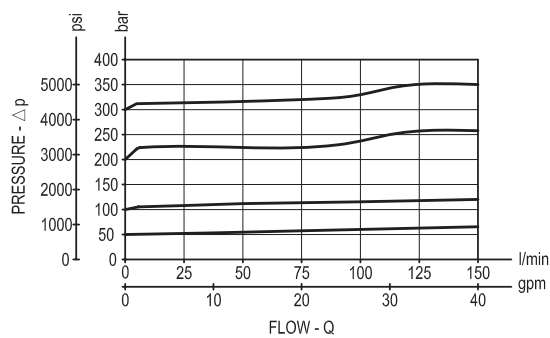


X	ADJUSTMENTS	
03	Leakproof inner hex. socket screw	

OPTIONS	
Ordering code	Description
03.05.01.001	Sealing cap

CARTRIDGE TECHNICAL DATA
Special cavity: 005
For other details see "Cartridge Program Part 2: Oil Control" RE00162-02 or consult our website www.oilcontrol.com

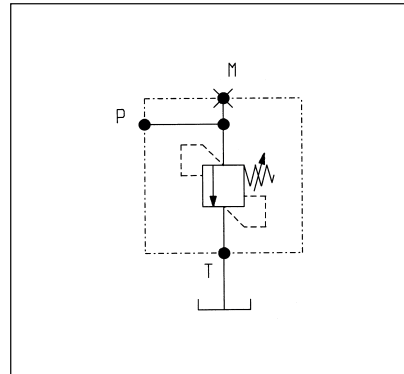
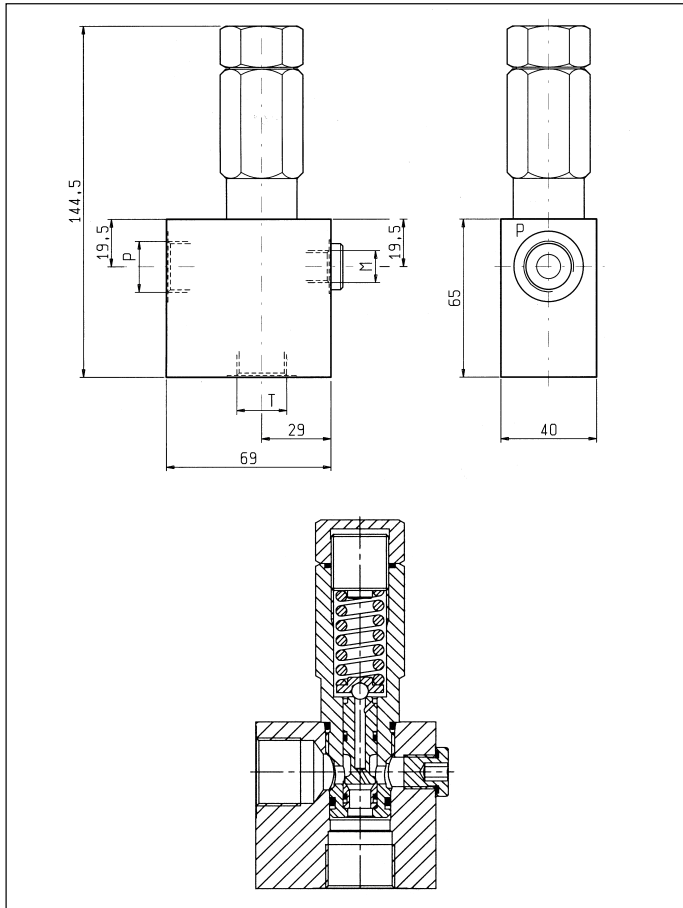
PERFORMANCE GRAPH



Druckbegrenzungsventile (230357) Limiteurs de pression

VSDC-150

05.12.02 - X - Y - Z

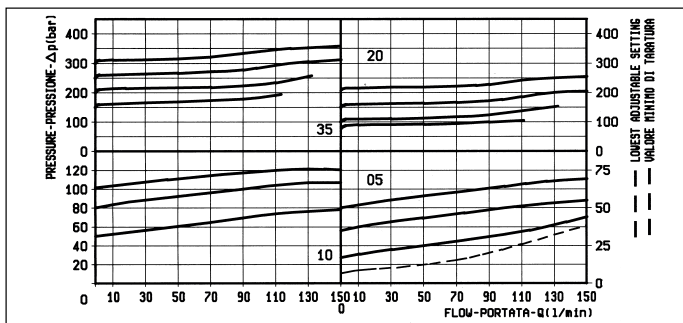


DATI TECNICI / TECHNICAL DATA

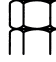

Pressione di lavoro max. 350 bar
Max. working pressure

Portata max. 150 l/min
Flow max.

Peso 0.9 kg
Weight



X REGOLAZIONI / ADJUSTMENTS

- 03** vite interna esagono incassato leakproof inner hex. socket screw 
- cappellotto per piombatura sealing cap codice / ordering code 03.05.01.001 

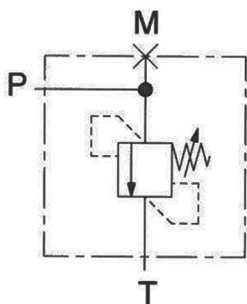
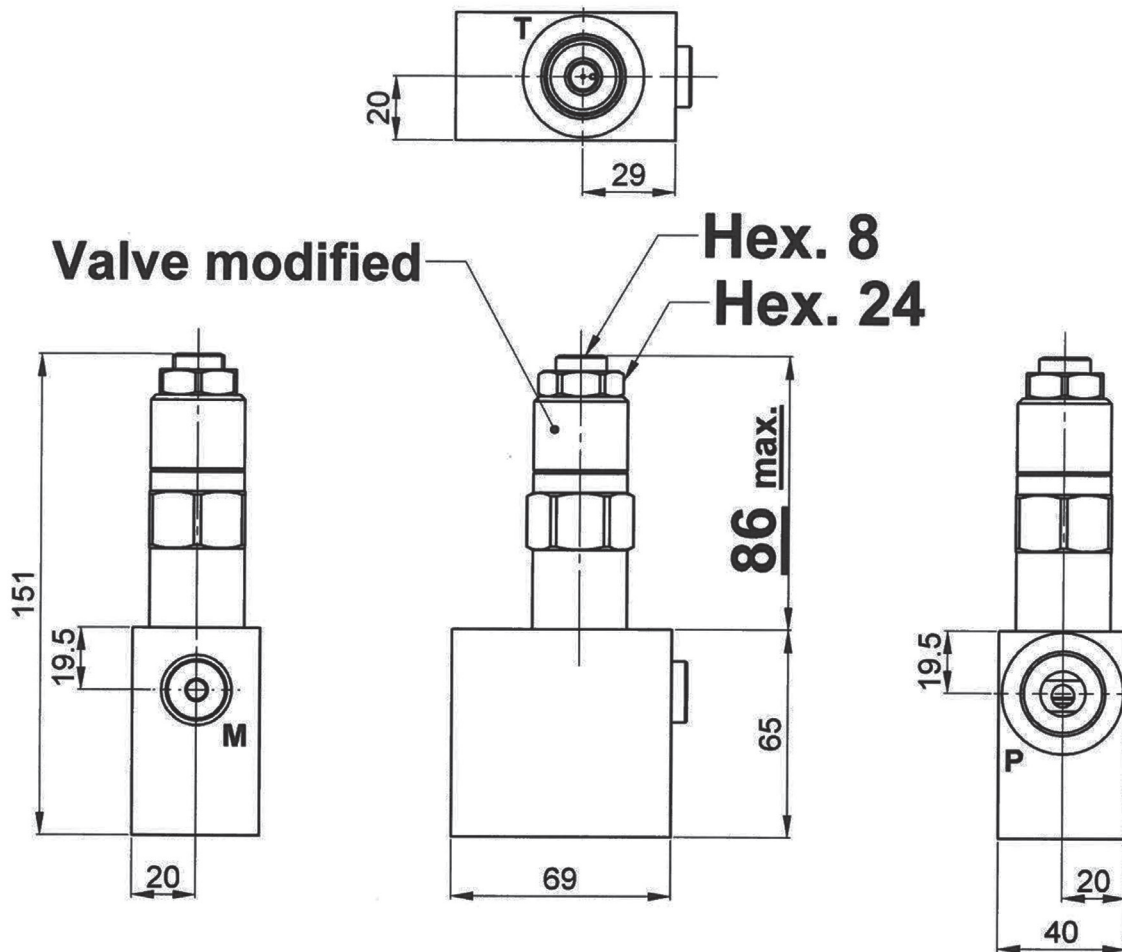
Z	MOLLE / SPRINGS				
	Campo taratura min - max bar Adj. press. range bar	Incremento press. bar / giro vite Press. increase bar / turn	Taratura standard bar (Q = 5 l/min) Std. setting bar (Q = 5 l/min)	Cod. ordinazione Ordering code	Colore Colour
05	5-50	16	50	03.51.01.150	nero black
10	40-100	33	100	03.51.01.151	blu blue
20	70-210	68	200	03.51.01.152	verde green
35	130-350	105	350	03.51.01.142	giallo yellow

Y ATTACCHI / PORT SIZE

Y	ATTACCHI / PORT SIZE	
	P-T	M
02	G 1/2	G 1/4
03	G 3/4	G 1/4

Druckbegrenzungsventile (230358) Limiteurs de pression

VSDC-150-34-35-A



Max. working pressure = up to 210 bar

Flow max. = 150 l/min

Adj. press. range bar = 130-350

Press. increase bar/turn = 105

Std. setting bar (Q = 5 l/min) = 350

PORT SIZE

P-T = G 3/4

M = G1/4

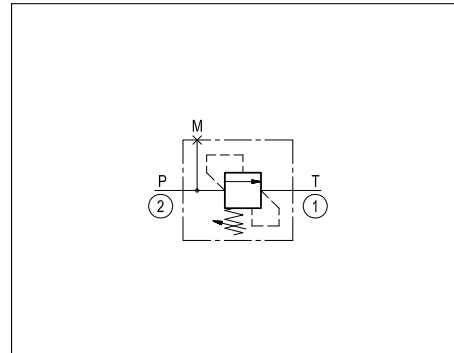
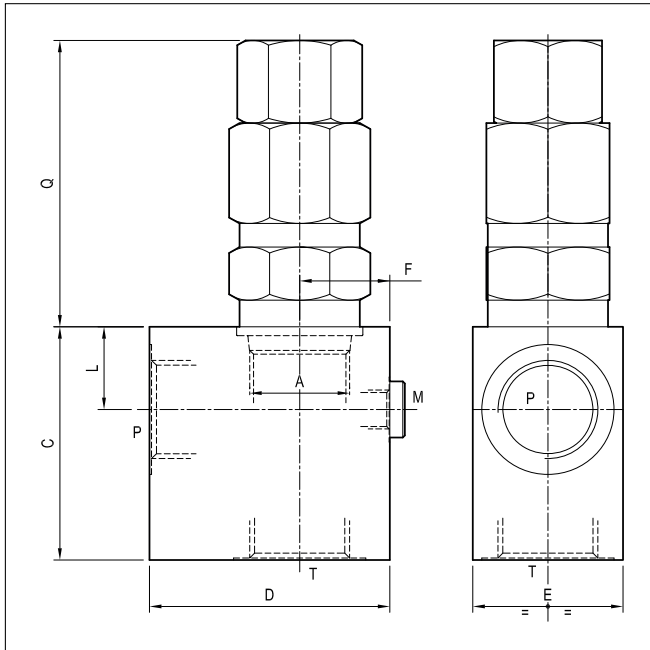
For dimensions without tolerance, consider ± 0.5 mm

All dimensions : mm

Druckbegrenzungsventile (230359) Limiteurs de pression

VSDC-250

05.12.03 - X - Y - Z



TECHNISCHE DATEN		
Max. Volumenstrom:	bis 240 l/min	(63 gpm)
Max. Betriebsdruck:	210 bar	(3000 psi)
Standard-Anschlussblöcke aus hochfestem Aluminium. Für Arbeitsdrücke bis 350 bar (5000 psi) und für Dauerwechselbeanspruchung bei jedem Arbeitsdruck sind auf Anfrage auch Anschlussblöcke aus Stahl lieferbar.		
X	Siehe nächste Seite	

Sonder- einschraub- bohrung	Y	ANSCHLUSS- GRÖSSE		ABMESSUNGEN mm (Zoll)														
		P-T	M	C	D	E	F	G	H	I	L	M	N	O	Q	R	S	
003	04	G 3/4	G 1/4	79 (3,11)	80 (3,15)	50 (1,97)	30 (1,18)							28 (1,10)			97 (3,82)	
	05	G 1	G 1/4	79 (3,11)	80 (3,15)	50 (1,97)	30 (1,18)							28 (1,10)			97 (3,82)	

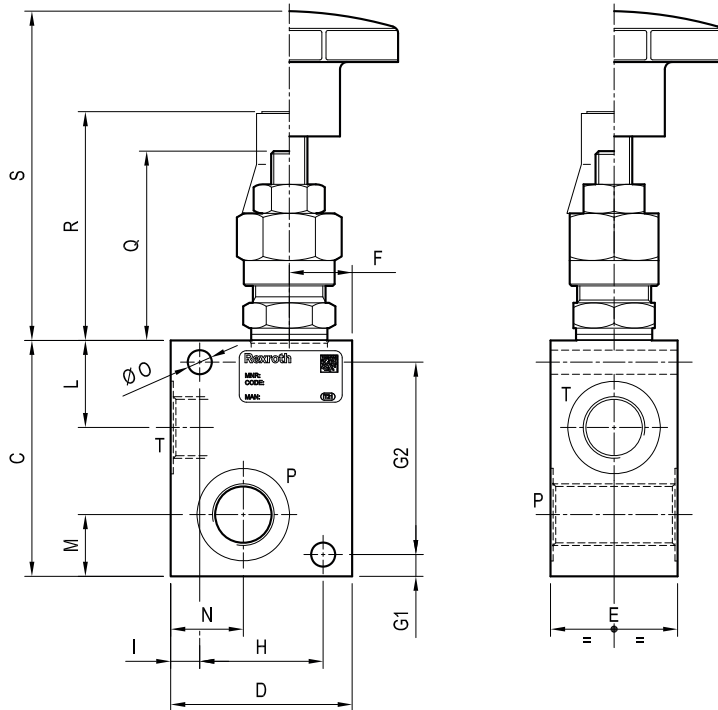
Z	FEDERN				
	Einstellbereich bar (psi)	Druckanstieg bar (psi)	Standardeinstellung bar (psi) Q=5 l/min	Typschlüssel	Farbe
10	35-100 (500-1450)	18 (261)	100 (1450)	03.51.01.068	blau
20	70-210 (1000-3000)	36 (522)	200 (2900)	03.51.01.067	grün
35	120-350 (1750-5000)	62 (899)	350 (5000)	03.51.01.057	gelb

Druckbegrenzungsventile (230361) Limiteurs de pression

VSC-30

05.13.01 - X - Y - Z

Dimensions



Technical data

Max flow: up to 30 l/min (8 gpm)

Max operating pressure: 210 bar (3000 psi)

Standard manifolds in high strength **aluminium**.

For working pressure up to 350 bar (5000 psi) and for fatigue applications with any working pressure, steel manifolds are available upon request.

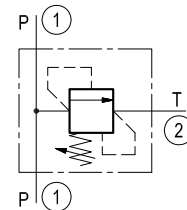
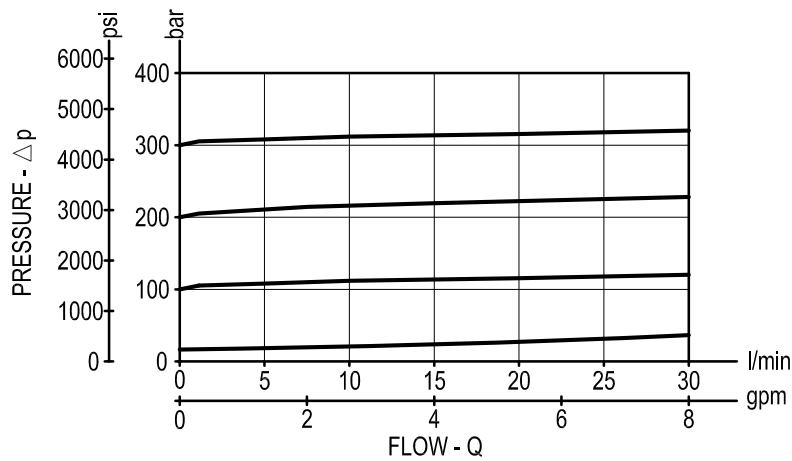


Table "Y"

Special Cavity	Y	PORT SIZE	DIMENSIONS mm (Inches)														
			P - T	C	D	E	F	G1	G2	H	I	L	M	N	O	Q	R
008	09	G 1/4	65 (2.56)	50 (1.97)	35 (1.38)	18 (0.71)	6 (0.24)	53 (2.09)	34 (1.34)	8 (0.32)	24 (0.95)	17 (0.67)	22 (0.87)	6.5 (0.26)	51 (2.01)	61 (2.40)	89 (3.50)
	02	G 3/8	65 (2.56)	50 (1.97)	35 (1.38)	18 (0.71)	6 (0.24)	53 (2.09)	34 (1.34)	8 (0.32)	24 (0.95)	17 (0.67)	20 (0.79)	6.5 (0.26)	51 (2.01)	61 (2.40)	89 (3.50)
	03	G 1/2	65 (2.56)	50 (1.97)	35 (1.38)	18 (0.71)	6 (0.24)	53 (2.09)	34 (1.34)	8 (0.32)	24 (0.95)	17 (0.67)	18 (0.71)	6.5 (0.26)	51 (2.01)	61 (2.40)	89 (3.50)

Druckbegrenzungsventile (230361) Limiteurs de pression

Performance graph



Druckbegrenzungsventile (230361) Limiteurs de pression

Ordering code

05.13.01	X	Y	Z
----------	---	---	---

Manifold with relief, direct acting
guided poppet type
Special cavity

Settings - Springs
(see table Z on page 2)

Cartridge style - Adjustments
(see table X on page 2)

Manifold style - Dimensions and port sizes
(see table Y on page 1)

Preferred types (readily available)

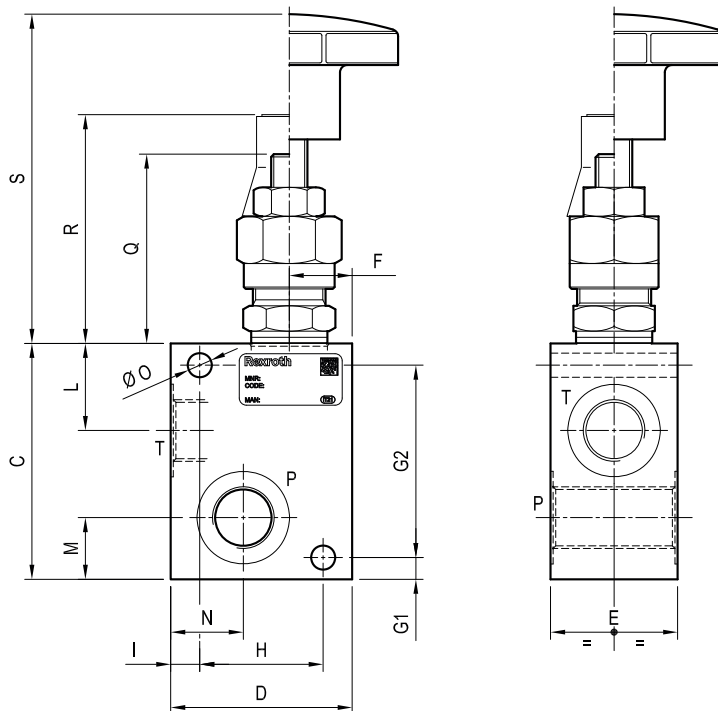
Type	Material number	Type	Material number
051301030905000	R930001280	051301040235000	R930001290
051301030910000	R930001281	051301040305000	R930001291
051301030920000	R930001282	051301040320000	R930001292
051301030935000	R930001283	051301040335000	R930001293
051301030205000	R930001263		
051301030210000	R930001264		
051301030220000	R930001266		
051301030235000	R930001269		
051301030305000	R930001271		
051301030310000	R930001274		
051301030320000	R930001275		
051301030335000	R930001278		
051301040205000	R930001287		
051301040210000	R930001288		
051301040220000	R930001289		

Druckbegrenzungsventile (230362) Limiteurs de pression

VSC-30

05.13.01 - X - Y - Z

Dimensions



Technical data

Max flow:	up to 30 l/min	(8 gpm)
Max operating pressure:	210 bar	(3000 psi)

Standard manifolds in high strength **aluminium**.
For working pressure up to 350 bar (5000 psi) and for fatigue applications with any working pressure, steel manifolds are available upon request.

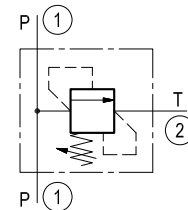
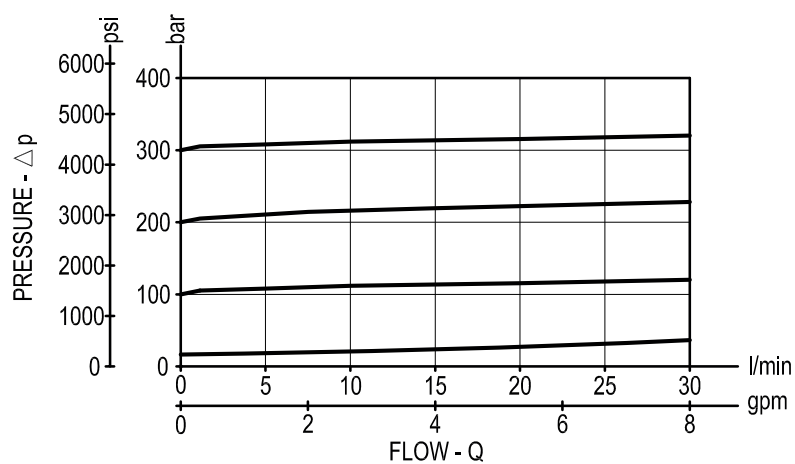


Table "Y"

Special Cavity	Y	PORT SIZE	DIMENSIONS mm (Inches)														
			P - T	C	D	E	F	G1	G2	H	I	L	M	N	O	Q	R
008	09	G 1/4	65 (2.56)	50 (1.97)	35 (1.38)	18 (0.71)	6 (0.24)	53 (2.09)	34 (1.34)	8 (0.32)	24 (0.95)	17 (0.67)	22 (0.87)	6.5 (0.26)	51 (2.01)	61 (2.40)	89 (3.50)
	02	G 3/8	65 (2.56)	50 (1.97)	35 (1.38)	18 (0.71)	6 (0.24)	53 (2.09)	34 (1.34)	8 (0.32)	24 (0.95)	17 (0.67)	20 (0.79)	6.5 (0.26)	51 (2.01)	61 (2.40)	89 (3.50)
	03	G 1/2	65 (2.56)	50 (1.97)	35 (1.38)	18 (0.71)	6 (0.24)	53 (2.09)	34 (1.34)	8 (0.32)	24 (0.95)	17 (0.67)	18 (0.71)	6.5 (0.26)	51 (2.01)	61 (2.40)	89 (3.50)

Druckbegrenzungsventile (230362) Limiteurs de pression

Performance graph

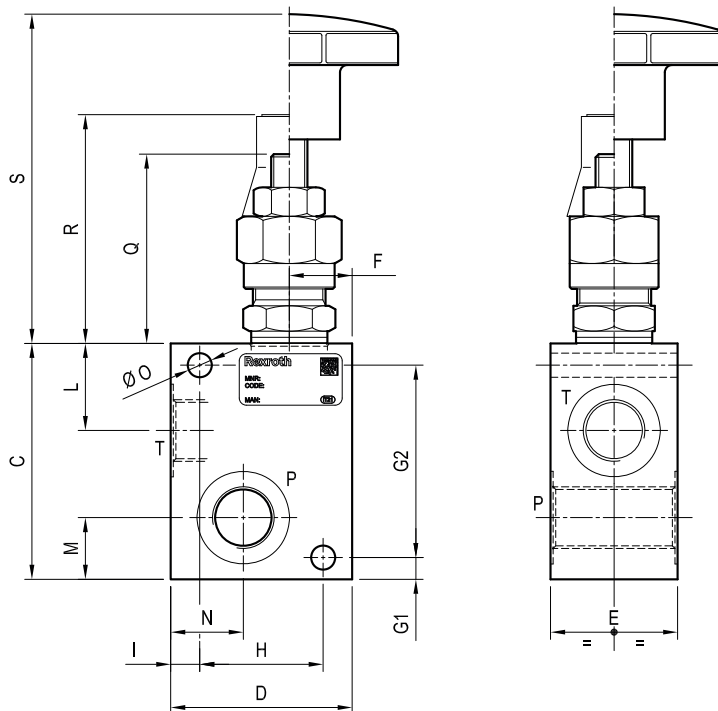


Druckbegrenzungsventile (230363) Limiteurs de pression

VSC-30

05.13.01 - X - Y - Z

Dimensions



Technical data

Max flow:	up to 30 l/min	(8 gpm)
Max operating pressure:	210 bar	(3000 psi)

Standard manifolds in high strength **aluminium**.
For working pressure up to 350 bar (5000 psi) and for fatigue applications with any working pressure, steel manifolds are available upon request.

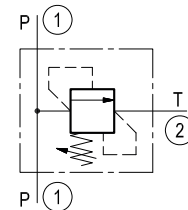
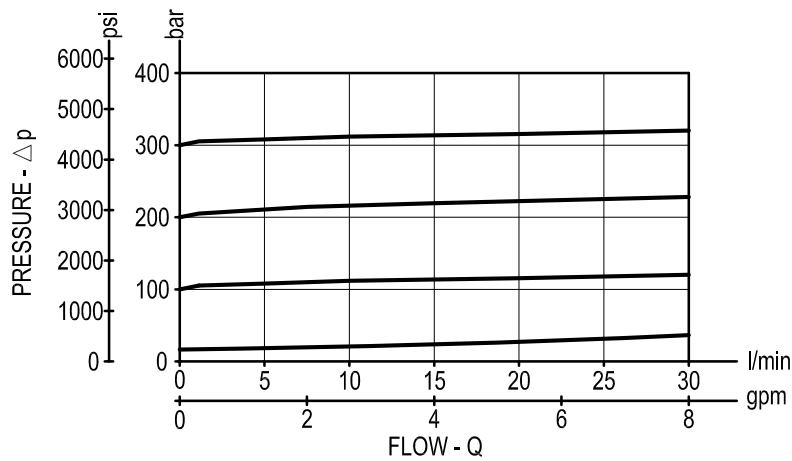


Table "Y"

Special Cavity	Y	PORT SIZE	DIMENSIONS mm (Inches)														
			P - T	C	D	E	F	G1	G2	H	I	L	M	N	O	Q	R
008	09	G 1/4	65 (2.56)	50 (1.97)	35 (1.38)	18 (0.71)	6 (0.24)	53 (2.09)	34 (1.34)	8 (0.32)	24 (0.95)	17 (0.67)	22 (0.87)	6.5 (0.26)	51 (2.01)	61 (2.40)	89 (3.50)
	02	G 3/8	65 (2.56)	50 (1.97)	35 (1.38)	18 (0.71)	6 (0.24)	53 (2.09)	34 (1.34)	8 (0.32)	24 (0.95)	17 (0.67)	20 (0.79)	6.5 (0.26)	51 (2.01)	61 (2.40)	89 (3.50)
	03	G 1/2	65 (2.56)	50 (1.97)	35 (1.38)	18 (0.71)	6 (0.24)	53 (2.09)	34 (1.34)	8 (0.32)	24 (0.95)	17 (0.67)	18 (0.71)	6.5 (0.26)	51 (2.01)	61 (2.40)	89 (3.50)

Druckbegrenzungsventile (230363) Limiteurs de pression

Performance graph



Druckbegrenzungsventile (230363) Limiteurs de pression

Ordering code

05.13.01	X	Y	Z
----------	---	---	---

Manifold with relief, direct acting
guided poppet type
Special cavity

Settings - Springs
(see table Z on page 2)

Cartridge style - Adjustments
(see table X on page 2)

Manifold style - Dimensions and port sizes
(see table Y on page 1)

Preferred types (readily available)

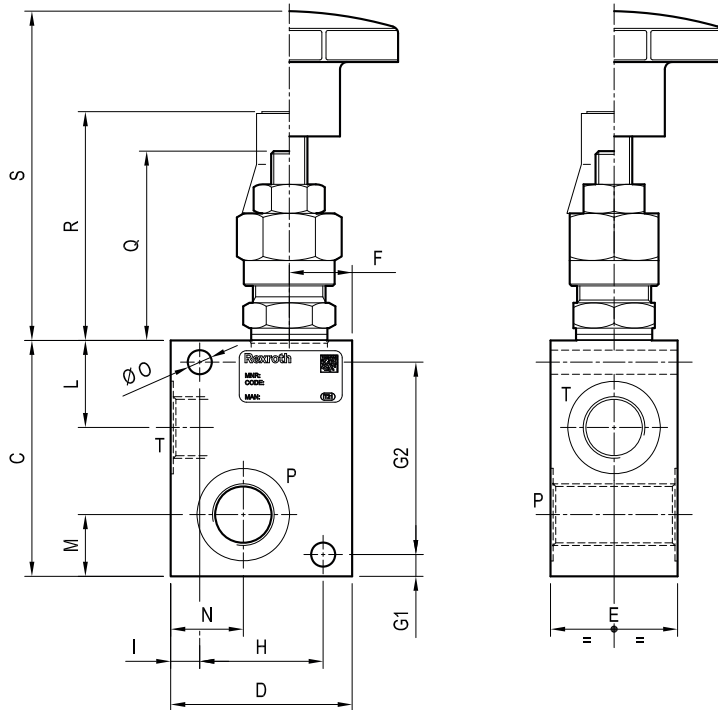
Type	Material number	Type	Material number
051301030905000	R930001280	051301040235000	R930001290
051301030910000	R930001281	051301040305000	R930001291
051301030920000	R930001282	051301040320000	R930001292
051301030935000	R930001283	051301040335000	R930001293
051301030205000	R930001263		
051301030210000	R930001264		
051301030220000	R930001266		
051301030235000	R930001269		
051301030305000	R930001271		
051301030310000	R930001274		
051301030320000	R930001275		
051301030335000	R930001278		
051301040205000	R930001287		
051301040210000	R930001288		
051301040220000	R930001289		

Druckbegrenzungsventile (230364) Limiteurs de pression

VSC-30

05.13.01 - X - Y - Z

Dimensions



Technical data

Max flow: up to 30 l/min (8 gpm)

Max operating pressure: 210 bar (3000 psi)

Standard manifolds in high strength **aluminium**.

For working pressure up to 350 bar (5000 psi) and for fatigue applications with any working pressure, steel manifolds are available upon request.

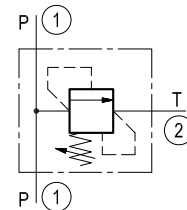
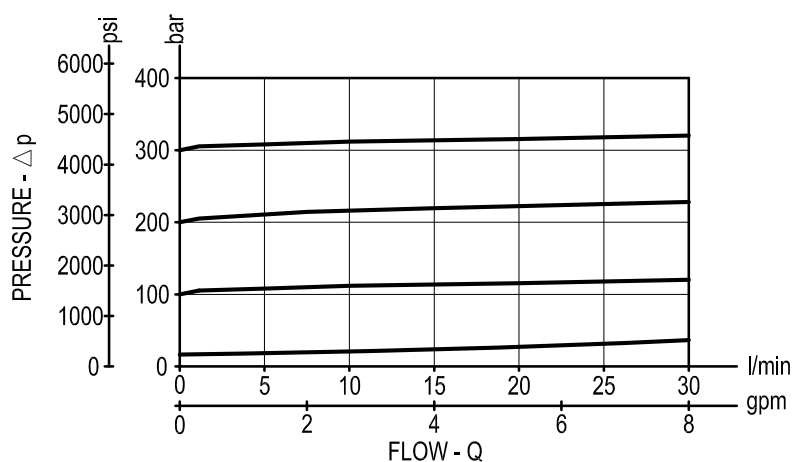


Table "Y"

Special Cavity	Y	PORT SIZE	DIMENSIONS mm (Inches)															
			P - T	C	D	E	F	G1	G2	H	I	L	M	N	O	Q	R	S
008	09	G 1/4		65 (2.56)	50 (1.97)	35 (1.38)	18 (0.71)	6 (0.24)	53 (2.09)	34 (1.34)	8 (0.32)	24 (0.95)	17 (0.67)	22 (0.87)	6.5 (0.26)	51 (2.01)	61 (2.40)	89 (3.50)
	02	G 3/8		65 (2.56)	50 (1.97)	35 (1.38)	18 (0.71)	6 (0.24)	53 (2.09)	34 (1.34)	8 (0.32)	24 (0.95)	17 (0.67)	20 (0.79)	6.5 (0.26)	51 (2.01)	61 (2.40)	89 (3.50)
	03	G 1/2		65 (2.56)	50 (1.97)	35 (1.38)	18 (0.71)	6 (0.24)	53 (2.09)	34 (1.34)	8 (0.32)	24 (0.95)	17 (0.67)	18 (0.71)	6.5 (0.26)	51 (2.01)	61 (2.40)	89 (3.50)

Druckbegrenzungsventile (230364) Limiteurs de pression

Performance graph

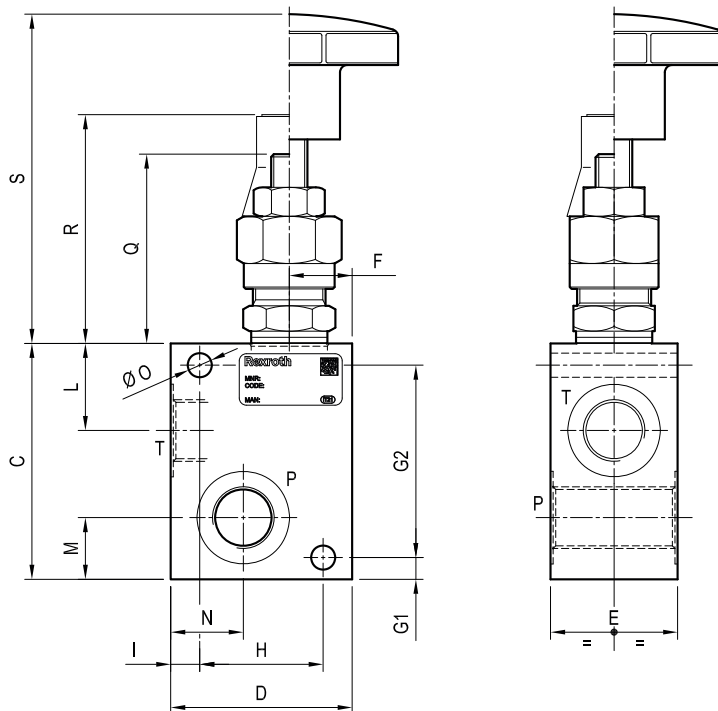


Druckbegrenzungsventile (230365) Limiteurs de pression

VSC-30

05.13.01 - X - Y - Z

Dimensions



Technical data

Max flow: up to 30 l/min (8 gpm)

Max operating pressure: 210 bar (3000 psi)

Standard manifolds in high strength **aluminium**.

For working pressure up to 350 bar (5000 psi) and for fatigue applications with any working pressure, steel manifolds are available upon request.

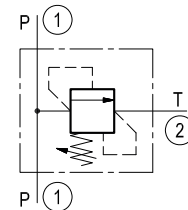
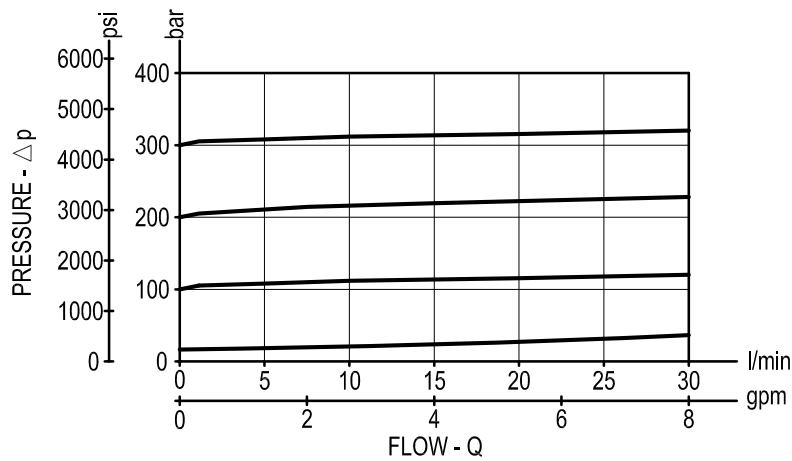


Table "Y"

Special Cavity	Y	PORT SIZE	DIMENSIONS mm (Inches)														
			P - T	C	D	E	F	G1	G2	H	I	L	M	N	O	Q	R
008	09	G 1/4	65 (2.56)	50 (1.97)	35 (1.38)	18 (0.71)	6 (0.24)	53 (2.09)	34 (1.34)	8 (0.32)	24 (0.95)	17 (0.67)	22 (0.87)	6.5 (0.26)	51 (2.01)	61 (2.40)	89 (3.50)
	02	G 3/8	65 (2.56)	50 (1.97)	35 (1.38)	18 (0.71)	6 (0.24)	53 (2.09)	34 (1.34)	8 (0.32)	24 (0.95)	17 (0.67)	20 (0.79)	6.5 (0.26)	51 (2.01)	61 (2.40)	89 (3.50)
	03	G 1/2	65 (2.56)	50 (1.97)	35 (1.38)	18 (0.71)	6 (0.24)	53 (2.09)	34 (1.34)	8 (0.32)	24 (0.95)	17 (0.67)	18 (0.71)	6.5 (0.26)	51 (2.01)	61 (2.40)	89 (3.50)

Druckbegrenzungsventile (230365) Limiteurs de pression

Performance graph



Druckbegrenzungsventile (230365) Limiteurs de pression

Ordering code

05.13.01	X	Y	Z
----------	---	---	---

Manifold with relief, direct acting
guided poppet type
Special cavity

Settings - Springs
(see table Z on page 2)

Cartridge style - Adjustments
(see table X on page 2)

Manifold style - Dimensions and port sizes
(see table Y on page 1)

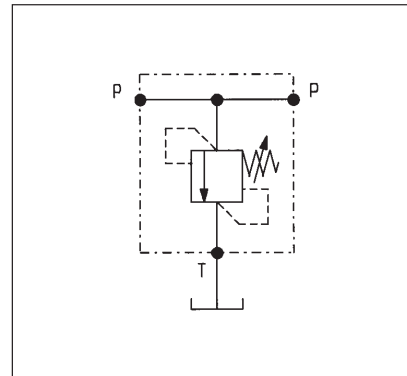
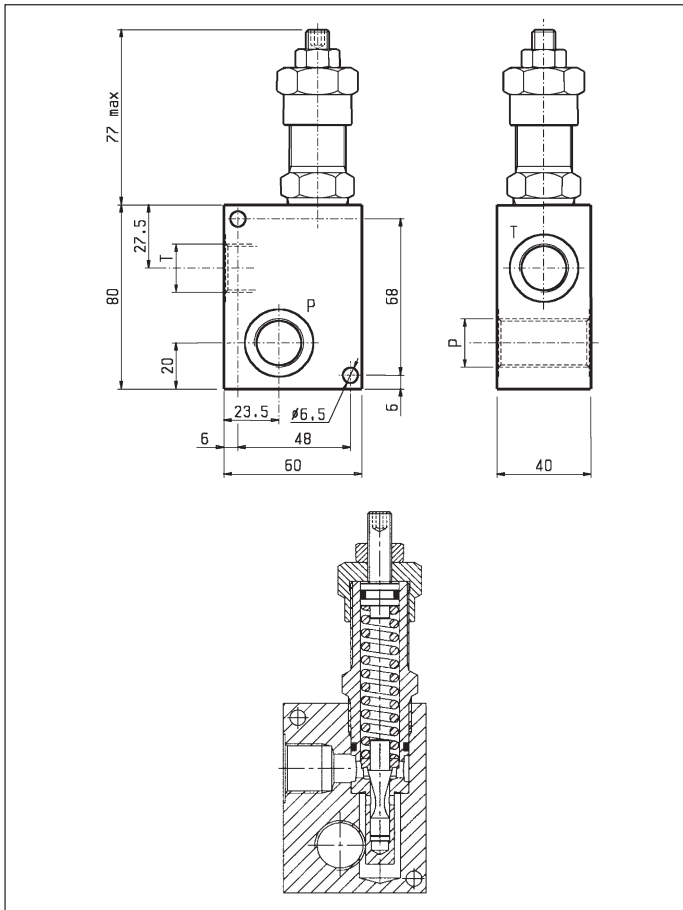
Preferred types (readily available)

Type	Material number	Type	Material number
051301030905000	R930001280	051301040235000	R930001290
051301030910000	R930001281	051301040305000	R930001291
051301030920000	R930001282	051301040320000	R930001292
051301030935000	R930001283	051301040335000	R930001293
051301030205000	R930001263		
051301030210000	R930001264		
051301030220000	R930001266		
051301030235000	R930001269		
051301030305000	R930001271		
051301030310000	R930001274		
051301030320000	R930001275		
051301030335000	R930001278		
051301040205000	R930001287		
051301040210000	R930001288		
051301040220000	R930001289		

Druckbegrenzungsventile (230366) Limiteurs de pression

VSC-80

05.13.02 - X - Y - Z

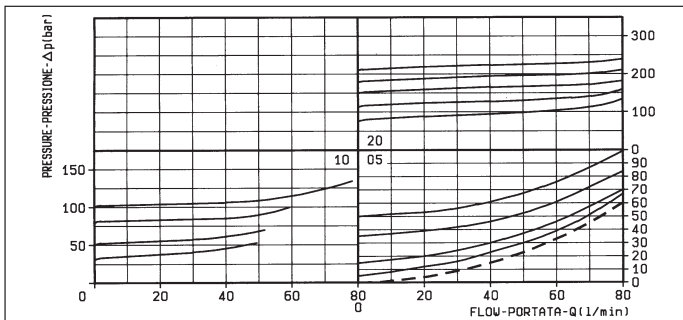


DATI TECNICI / TECHNICAL DATA

Pressione di lavoro max. 250 bar
Max. working pressure

Portata max. 80 l/min
Flow max.

Peso 0.75 kg
Weight



X	REGOLAZIONI ADJUSTMENTS
03	vite esterna esagono incassato leakproof hex. socket screw 
04	volantino e dado handknob and locknut 
	cappello per piombatura sealing cap codice / ordering code 03.05.01.001 

Z	MOLLE / SPRINGS				
	Campo taratura min - max bar Adj. press. range bar	Incremento press. bar / giro vite Press. increase bar / turn	Taratura standard bar (Q = 5 l/min) Std. setting bar (Q = 5 l/min)	Cod. ordinazione Ordering code	Colore Colour
05	5-50	6	50	03.51.01.020	nero black
10	35-100	12	100	03.51.01.001	blu blue
20	80-250	27	200	03.51.01.010	rosso red

Y	ATTACCHI / PORT SIZE	
	P - T	
03	G 1/2	
04	G 3/4	