

Hubbegrenzungsventil (Kippventil) VFCR T2

BESTELLNUMMER / ORDERING CODE

3 VFCR 2T XXXX

0600 = 60 l/min ANSCHLÜSSE 3/8" GAS / GAUGE 3/8" G
 0800 = 80 l/min ANSCHLÜSSE 1/2" GAS / GAUGE 1/2" G
 1200 = 120 l/min ANSCHLÜSSE 3/4" GAS / GAUGE 3/4" G
 2000 = 200 l/min ANSCHLÜSSE 1" GAS / GAUGE 1" G
 2500 = 250 l/min ANSCHLÜSSE 1" 1/4 GAS / GAUGE 1" 1/4 G

MODELL / MODEL

ZUBEHÖR / ACCESSORIES



2T 60

2T 120

2T 250

2T 80

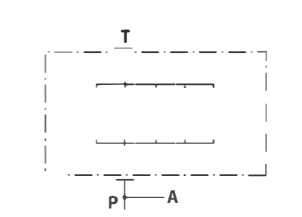
2T 200

TECHNISCHE EIGENSCHAFTEN / TECHNICAL SPECIFICATIONS

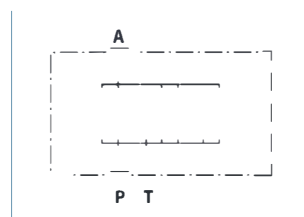
Nenndurchfluss Flow rate	60 - 80 - 120 - 200 - 250 l/min	Bereich °C (t) Range °C (t)	-25° + 80 °C
Maximaler Arbeitsdruck Max working pressure	350 bar	Viskositätsbereich Viscosity range	12-100 cSt
Maximaler Spitzendruck Max peak pressure (<0.1 s)	500 bar	Filtration / Filtering ISO 4406 βx=75	20/17 25 μm
Mineralöl Mineral oil	HLP (DIN 51525)	Gewicht Weight	1.7 - 1.7 - 2.2 - 3.7 - 6.1 kg

- Mechanisch betätigtes Zwei-Stellungs-Hubbegrenzungsventil (über Zugseil) für Kippfahrzeuge.
- Die Modelle 60 - 80 - 120 entladen den Fluss, ohne den Zylinder zu blockieren. Sie werden in einer Abzweigung installiert.
- Die Modelle 200 - 250 entladen den Durchfluss ebenfalls, ohne den Zylinder zu blockieren, müssen jedoch an der Druckleitung installiert werden.
- Anflanschbar an Fahrgestell.
- Verschiedene Nenndurchflüsse verfügbar.

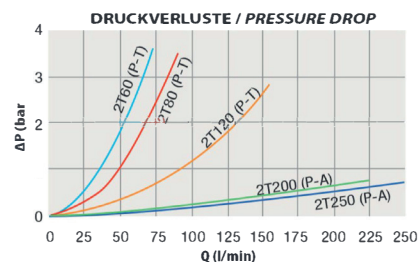
- Two position mechanically operated end-stroke valve for tipper vehicle (trailer).
- Models 60 - 80 - 120 send the oil flow to the tank without holding the cylinder.
- Models 200 - 250 send the oil flow to the tank without holding the cylinder too, but they need on-line mounting.
- Flange connection to chassis.
- Several flow rate models are available.



Mod. VFCR 2T 60 - 80 - 120



Mod. VFCR 2T 200 - 250

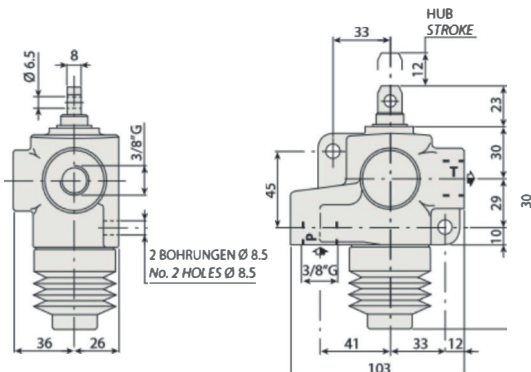


DIE MESSUNGEN WURDEN MIT ÖL ISO VG 46 BEI 50 °C (ν = 30 cSt) DURCHFÜHRT
 THE ABOVE SPECIFICATIONS REFER TO OIL TYPE ISO VG 46 AT 50 °C (ν = 30 cSt)

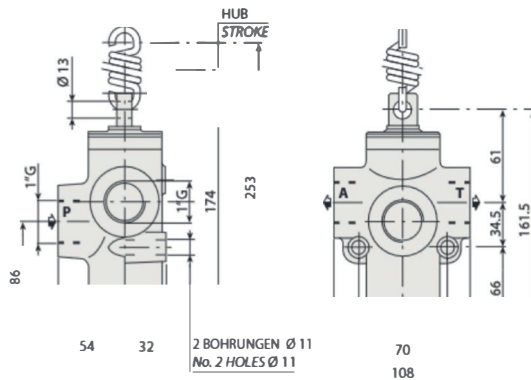
Hubbegrenzungsventil (Kippventil)

VFCR T2

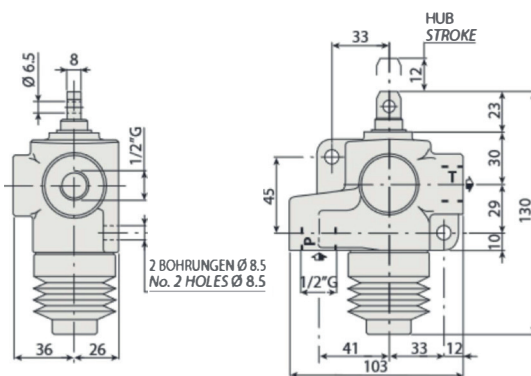
Mod. 2T 60



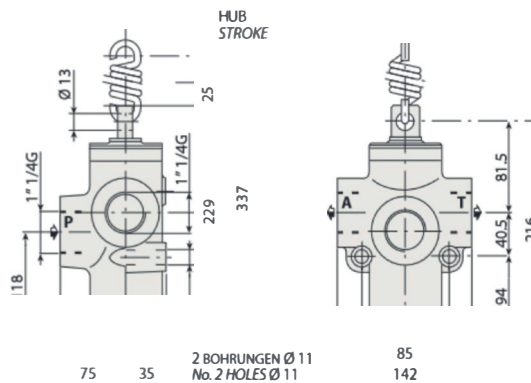
Mod. 2T 200



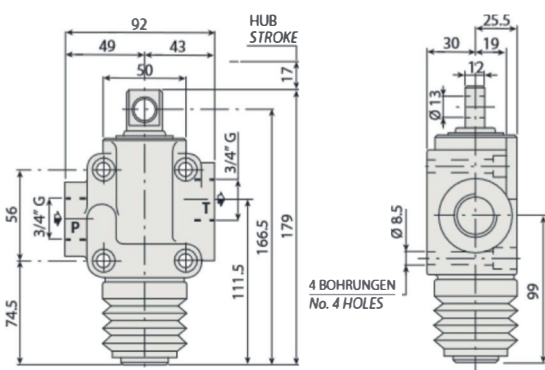
Mod. 2T 80



Mod. 2T 250



Mod. 2T 120



INSTALLATIONSBEISPIEL / INSTALLATION EXAMPLE

