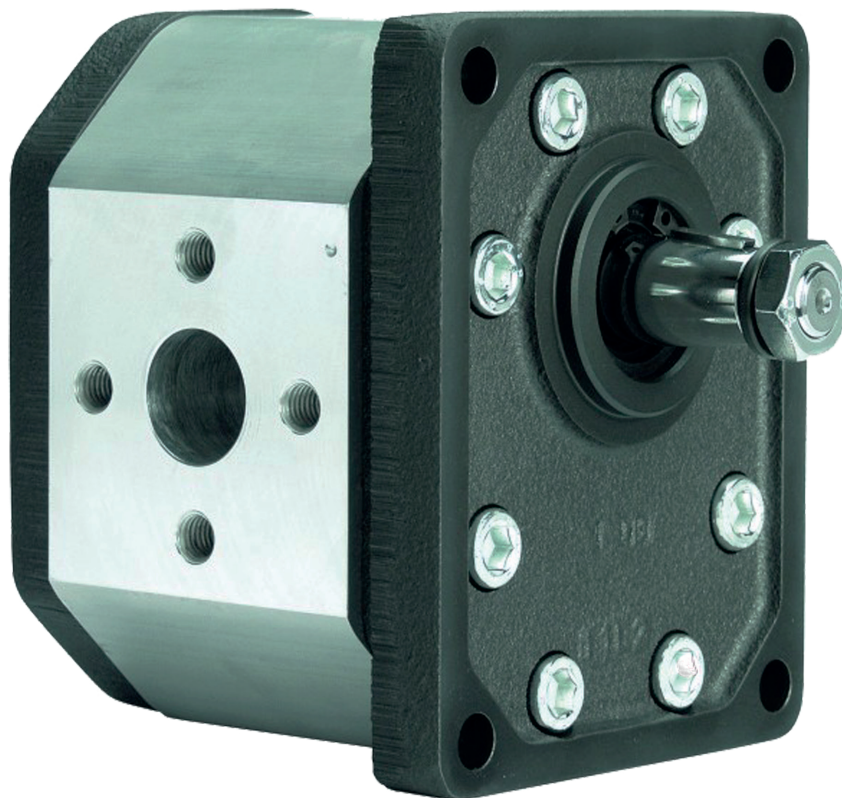


Pompe ad ingranaggi gear pumps GHP3



Pompe ad ingranaggi gear pumps GHP3

COME ORDINARE / HOW TO ORDER

| GHP3 | TIPO TYPE | ROTAZIONE ROTATION | TAGLIA SIZE | ALBERO* SHAFT* | PORTE* PORTS* | GUARNIZIONI* SEALS* | OPZIONI* OPTIONS* | DRENAGGIO* DRAIN* |
|------|--------------|------------------------------------|----------------|-------------------|------------------|--|----------------------|----------------------|
| | omit | D DESTRA CLOCKWISE | 30 | | | Guarnizioni / Seals omit (T range = -10°C + 80°C) V H ... Opzioni / Options TR ... Drenaggio (solo per rotazione R) Drain (only for R rotation) E0 = drenaggio interno/internal drain E1 = drenaggio esterno/external drain G3/8 *** E2 = drenaggio esterno/external drain 3/4-16 UNF E3 = drenaggio esterno/external drain G1/4 *** E4 = drenaggio esterno/external drain 9/16-18 UNF (*) = campi da specificare se diversi dallo standard "tipo pompa" / to be specified if different from standard pump type (***) = La rotazione reversibile R è disponibile per tutte le taglie indicate / R rotation is available for all listed displacements (***) = Porte di drenaggio lavorate secondo la specifica SAE J1926/1 (ISO 11926-1) relativa a porte filettate con tenuta O-ring. / Drain ports are machined in compliance with threaded port with O-ring seal in truncated housing SAE J1926/1 (ISO 11926-1). | | |
| | A | S SINISTRA COUNTER CLOCKWISE | 33 | | | | | |
| | A2 | R** REVERSIBILE REVERSIBLE | 40 | | | | | |
| | BK1 | | 50 | | | | | |
| | 5 | | 60 | | | | | |
| | | | 66 | | | | | |
| | | | 80 | | | | | |
| | | | 94 | | | | | |
| | | | 110 | | | | | |
| | | | 120 | | | | | |
| | | | 135 | | | | | |

Tipi Pompa Standard / Pump Standard Types

| | |
|------|--|
| omit | = flangia europea + albero T0 + porte E + guarnizioni standard / european flange + shaft T0 + ports E + standard seals |
| A | = flangia A + albero C1 + porte A + guarnizioni standard / flange A + shaft C1 + ports A + standard seals |
| A2 | = flangia A2 + albero C1 + porte A + guarnizioni standard / flange A2 + shaft C1 + ports A + standard seals |
| BK1 | = flangia BK1 + albero T1 + porte D + guarnizioni standard / flange BK1 + shaft T1 + ports D + standard seals |
| 5 | = flangia 5 + albero T2 + porte E + guarnizioni standard / flange 5 + shaft T2 + ports E + standard seals |

Esempi / Examples:

| | |
|--------------|--|
| GHP3-D-30 | = pompa destra, 20 cc/rev, flangia europea, albero conico 1:8, porte flangiate tipo E, guarnizioni standard rotation, 20 cc/rev, european flange, 1:8 tapered shaft, flanged ports E type, standard seals |
| GHP3-D-30-C0 | = pompa destra, 20 cc/rev, flangia europea, albero cilindrico (C0), porte flangiate tipo E, guarnizioni standard clockwise rotation, 20 cc/rev, european flange, cylindrical shaft (C0), flanged ports E type, standard seals |
| GHP3A-D-30-E | = pompa destra, 20 cc/rev, flangia SAE B-2 fori, albero cilindrico, porte flangiate (E), guarnizioni standard clockwise rotation, 20 cc/rev, SAE B 2 bolt flange, cylindrical shaft, european flanged ports (E), standard seals |

Pompe ad ingranaggi gear pumps

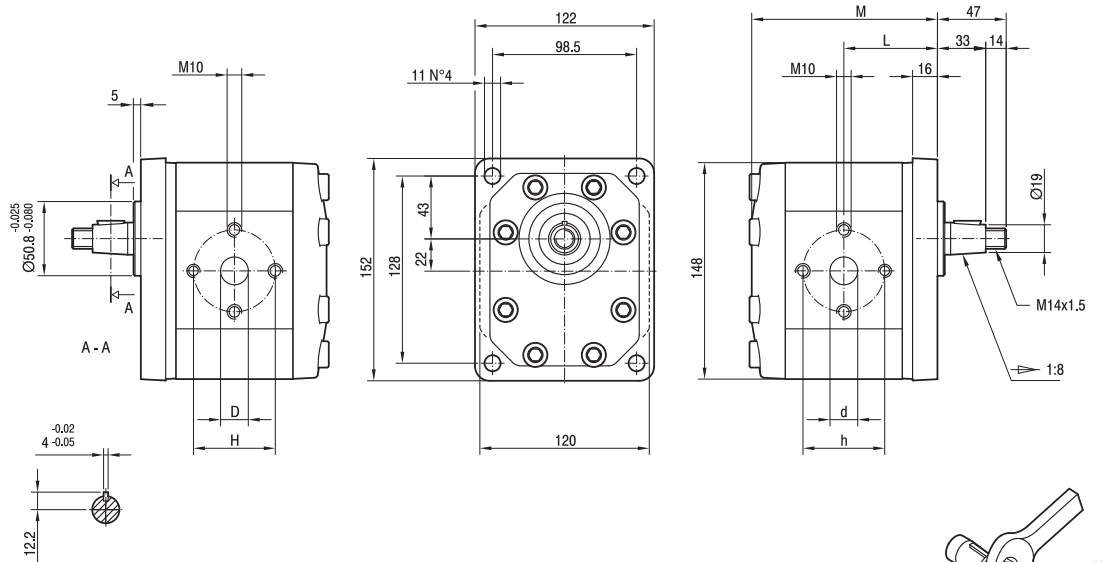
GHP3

Parti accessorie a corredo della pompa standard: linguetta a disco (codice 522058), dado M14x1.5 (codice 523017), rosetta elastica spaccata (codice 523006).
 Porte standard: filetti M10 profondità utile 19 mm.

Accessories supplied with the standard pump: woodruff key (code 522058), M14x1.5 exagonal nut (code 523017), washer (code 523006).
 Standard ports: M10 threads depth 19 mm.

MANDATA
OUTLET

ASPIRAZIONE
INLET



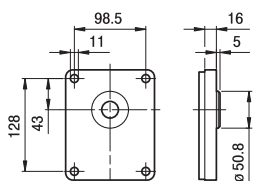
| TIPO TYPE | CILINDRATA DISPLACEMENT | PORTATA a 1500 giri/min FLOW at 1500 rev/min | PRESSIONI MASSIME MAX PRESSURE | | | VELOCITÀ MASSIMA MAX SPEED | DIMENSIONI DIMENSIONS | | | | | |
|--------------|--|---|-----------------------------------|----------------|----------------|-------------------------------|--------------------------|-----|----|----|----|----|
| | | | P ₁ | P ₂ | P ₃ | | L | M | d | D | h | H |
| | cm ³ /giro [cm ³ /rev] | litri/min [litres/min] | bar | bar | bar | giri/min [rpm] | mm | mm | mm | mm | mm | mm |
| GHP3-D-30 | 20 | 29 | 280 | 295 | 310 | 3500 | 64 | 127 | 27 | 19 | 56 | 56 |
| GHP3-D-33 | 22 | 31 | 280 | 295 | 310 | 3500 | 64,5 | 128 | 27 | 19 | 56 | 56 |
| GHP3-D-40 | 26 | 37 | 280 | 295 | 310 | 3000 | 66 | 131 | 27 | 19 | 56 | 56 |
| GHP3-D-50 | 33 | 48 | 270 | 285 | 300 | 3000 | 68,5 | 136 | 27 | 19 | 56 | 56 |
| GHP3-D-60 | 39 | 56 | 260 | 275 | 290 | 3000 | 70,5 | 140 | 27 | 19 | 56 | 56 |
| GHP3-D-66 | 44 | 62 | 250 | 265 | 280 | 2800 | 72 | 143 | 27 | 27 | 51 | 51 |
| GHP3-D-80 | 52 | 74 | 230 | 245 | 260 | 2400 | 75 | 149 | 27 | 27 | 56 | 56 |
| GHP3-D-94 | 61 | 87 | 210 | 225 | 240 | 2800 | 78 | 155 | 33 | 27 | 62 | 51 |
| GHP3-D-110 | 71 | 101 | 200 | 215 | 230 | 2500 | 81,5 | 162 | 33 | 27 | 62 | 51 |
| GHP3-D-120 | 78 | 112 | 180 | 195 | 210 | 2300 | 84 | 167 | 33 | 27 | 62 | 51 |
| GHP3-D-135 | 87 | 124 | 160 | 175 | 190 | 2000 | 87 | 173 | 33 | 27 | 62 | 51 |

Pompe ad ingranaggi gear pumps

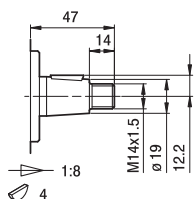
GHP3

FLANGE / FLANGES

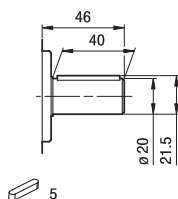
ALBERI / SHAFTS



TO



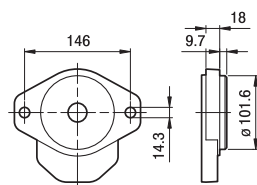
T0



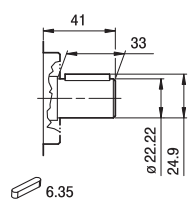
C0

Coppia Max
Max Torque 280 Nm

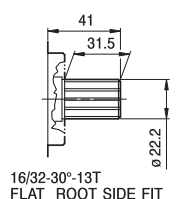
Coppia Max
Max Torque 265 Nm



A



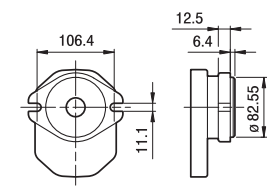
C1



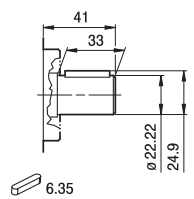
S1

Coppia Max
Max Torque 295 Nm

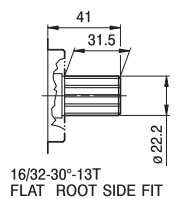
Coppia Max
Max Torque 405 Nm



A2



C1

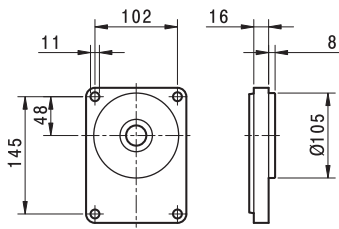


S1

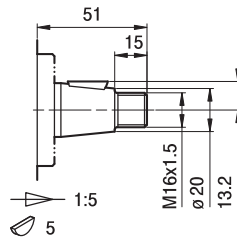
Coppia Max
Max Torque 295 Nm

Coppia Max
Max Torque 405 Nm

Pompe ad ingranaggi gear pumps GHP3

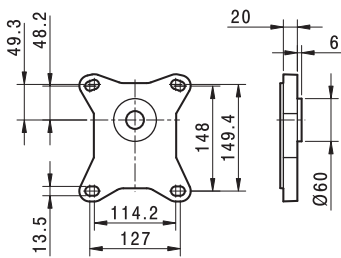


BK1

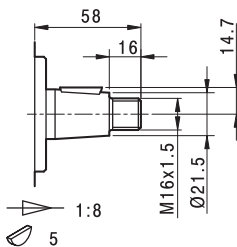


T1

Coppia Max
Max Torque 285 Nm



5

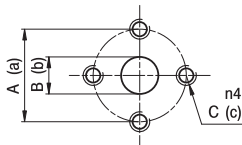


T2

Coppia Max
Max Torque 325 Nm

Pompe ad ingranaggi gear pumps GHP3

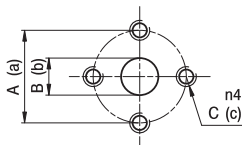
PORTE / PORTS



E

| TIPO TYPE | ASPIRAZIONE INLET | | | MANDATA OUTLET | | |
|------------------------|----------------------|----|-----|-------------------|----|-----|
| | A | B | C | a | b | c |
| GHP3...30 ÷ GHP3...60 | 56 | 27 | M10 | 56 | 19 | M10 |
| GHP3...66 | 51 | 27 | M10 | 51 | 27 | M10 |
| GHP3...80 | 56 | 27 | M10 | 56 | 27 | M10 |
| GHP3...94 ÷ GHP3...135 | 62 | 33 | M10 | 51 | 27 | M10 |

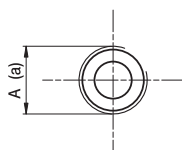
I valori delle coppie di serraggio delle viti presenti nel kit raccordo sono indicate a pag. 55 (capitolo accessori).
Tightening torques of the fittings screws are specified on page 55 (accessories section).



EP

| TIPO TYPE | ASPIRAZIONE INLET | | | MANDATA OUTLET | | |
|-----------------------|----------------------|----|-----|-------------------|----|----|
| | A | B | C | a | b | c |
| GHP3...30 ÷ GHP3...33 | 40 | 19 | M8 | 40 | 19 | M8 |
| GHP3...40 ÷ GHP3...80 | 51 | 27 | M10 | 40 | 19 | M8 |

I valori delle coppie di serraggio delle viti presenti nel kit raccordo sono indicate a pag. 55 (capitolo accessori).
Tightening torques of the fittings screws are specified on page 55 (accessories section).

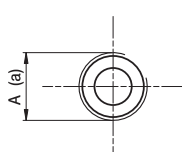


FG

| TIPO TYPE | ASPIRAZIONE INLET | MANDATA OUTLET |
|-------------------------|----------------------|-------------------|
| | A | a |
| GHP3...30 ÷ GHP3...33 | G3/4 | G3/4 |
| GHP3...40 ÷ GHP3...60 | G1 | G3/4 |
| GHP3...66 ÷ GHP3...94 | G1 1/4 | G1 |
| GHP3...110 ÷ GHP3...135 | G1 1/2 | G1 1/4 |

Raccordo G3/4 coppia di serraggio massima 60 Nm. Raccordo G1 coppia di serraggio massima 70 Nm. Raccordo G1 1/4 coppia di serraggio massima 80 Nm. Raccordo G1 1/2 coppia di serraggio massima 90 Nm. Consigliamo di richiedere conferma al fornitore del raccordo.

Tightening torques for G3/4 fitting: 60 Nm. Tightening torques for G1 fitting: 70 Nm. Tightening torques for G1 1/4 fitting: 80 Nm. Tightening torques for G1 1/2 fitting: 90 Nm. Please check with the fittings suppliers.



FC

| TIPO TYPE | ASPIRAZIONE INLET | MANDATA OUTLET |
|-------------------------|----------------------|-------------------|
| | A | a |
| GHP3...30 ÷ GHP3...33 | Rc3/4 | Rc3/4 |
| GHP3...40 ÷ GHP3...60 | Rc1 | Rc3/4 |
| GHP3...66 ÷ GHP3...94 | Rc1 1/4 | Rc1 |
| GHP3...110 ÷ GHP3...135 | Rc1 1/2 | Rc1 1/4 |

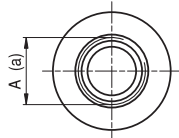
Raccordo Rc3/4 coppia di serraggio massima 60 Nm. Raccordo Rc1 coppia di serraggio massima 70 Nm. Raccordo Rc1 1/4 coppia di serraggio massima 80 Nm. Raccordo Rc1 1/2 coppia di serraggio massima 90 Nm. Consigliamo di richiedere conferma al fornitore del raccordo.

Tightening torques for Rc3/4 fitting: 60 Nm. Tightening torques for Rc1 fitting: 70 Nm. Tightening torques for Rc1 1/4 fitting: 80 Nm. Tightening torques for Rc1 1/2 fitting: 90 Nm. Please check with the fittings suppliers.

***** Nel caso di funzionamento a pressioni elevate e intermittenti è possibile una riduzione della resistenza a fatica del corpo.
A reduction of body's fatigue strength may occur if the pump is working at elevated and intermittent pressures.

Pompe ad ingranaggi gear pumps GHP3

PORTE / PORTS



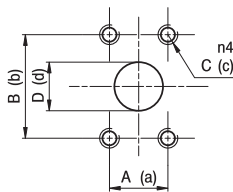
STANDARD SAE J1926/1

FA

| TIPO TYPE | ASPIRAZIONE INLET | | MANDATA OUTLET | |
|------------------------|----------------------|---------------|-------------------|--|
| | A | a | | |
| GHP3...30 ÷ GHP3...50 | 1 5/16-12 UNF | 1 1/16-12 UNF | | |
| GHP3...60 ÷ GHP3...80 | 1 5/8-12 UNF | 1 1/16-12 UNF | | |
| GHP3...94 ÷ GHP3...135 | 1 7/8-12 UNF | 1 5/16-12 UNF | | |

Raccordo 1 1/16-12 UNF coppia di serraggio massima 70 Nm. Raccordo 1 5/16-12 UNF coppia di serraggio massima 80 Nm. Raccordo 1 5/8-12 UNF coppia di serraggio massima 80 Nm. Raccordo 1 7/8-12 UNF coppia di serraggio massima 80 Nm. Consigliamo di richiedere conferma al fornitore del raccordo.

Tightening torques for 1 1/16-12 UNF fitting: 70 Nm. Tightening torques for 1 5/16-12 UNF fitting: 80 Nm. Tightening torques for 1 5/8-12 UNF fitting: 80 Nm. Tightening torques for 1 7/8-12 UNF fitting: 80 Nm. Please check with the fittings suppliers.

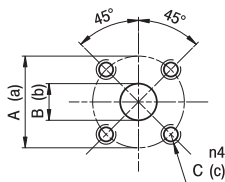


A

| TIPO TYPE | ASPIRAZIONE INLET | | | | MANDATA OUTLET | | | |
|------------------------|----------------------|-------|-------------|----|-------------------|-------|------------|----|
| | A | B | C | D | a | b | c | d |
| GHP3...30 ÷ GHP3...80 | 26,19 | 52,37 | 3/8-16 UNC | 27 | 22,23 | 47,63 | 3/8-16 UNC | 19 |
| GHP3...94 ÷ GHP3...135 | 30,2 | 58,7 | 7/16-14 UNC | 33 | 26,19 | 52,37 | 3/8-16 UNC | 27 |

I valori delle coppie di serraggio delle viti presenti nel kit raccordo sono indicate a pag 55 (capitolo accessori).

Tightening torques of the fittings screws are specified on page 55 (accessories section).



D

| TIPO TYPE | ASPIRAZIONE INLET | | | MANDATA OUTLET | | |
|-----------------------|----------------------|----|----|-------------------|----|----|
| | A | B | C | a | b | c |
| GHP3...30 ÷ GHP3...80 | 55 | 27 | M8 | 55 | 19 | M8 |

I valori delle coppie di serraggio delle viti presenti nel kit raccordo sono indicate a pag 55 (capitolo accessori).

Tightening torques of the fittings screws are specified on page 55 (accessories section).

Nel caso di funzionamento a pressioni elevate e intermittenti è possibile una riduzione della resistenza a fatica del corpo.
A reduction of body's fatigue strength may occur if the pump is working at elevated and intermittent pressures.