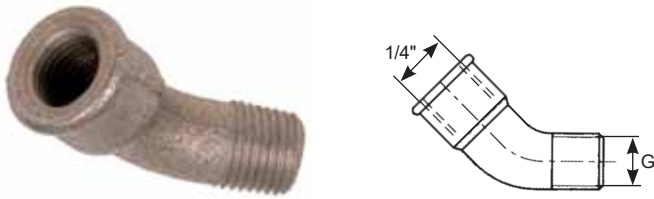


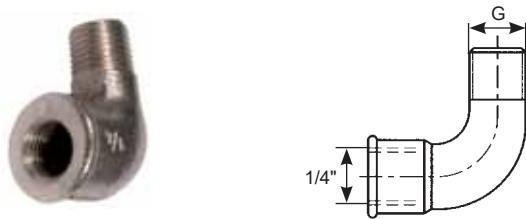
Zubehör zu Simalube  
Accessoires Simalube

**Bogen / Coude "45°"**



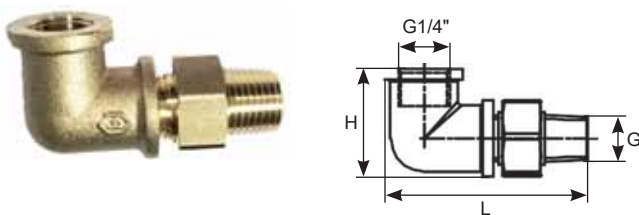
G	Prod-No	Art-No
R 1/4"	<b>290.1001</b>	650713

**Bogen / Coude "90°"**



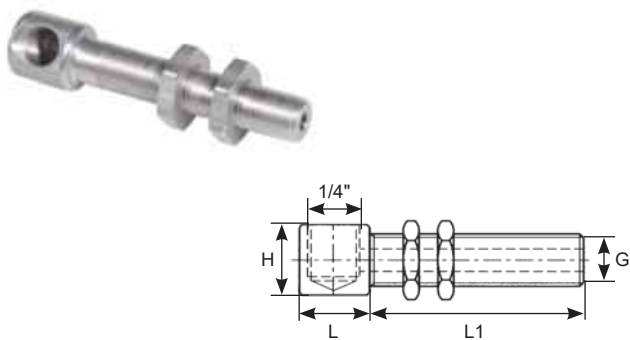
G	Prod-No	Art-No
R 1/4"	<b>290.1002</b>	650714

**Bogen schwenkbar / Coude pivotant "90°"**



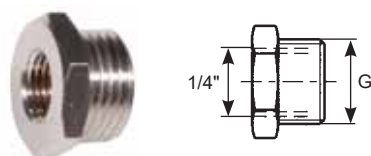
G	L x H mm	Prod-No	Art-No
R1/4"	51,00 x 27,75	<b>290.1004</b>	650807 <sup>n)</sup>

**90°-Anschluss mit Gewinde und 2 Muttern / Raccord 90° avec filetage et 2 écrous**



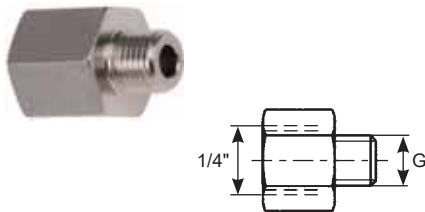
G	L1 x L x H mm	Prod-No	Art-No
R1/4"	20 x 70 x 20	<b>290.1005</b>	650715

**Anschlussnippel / Raccord**



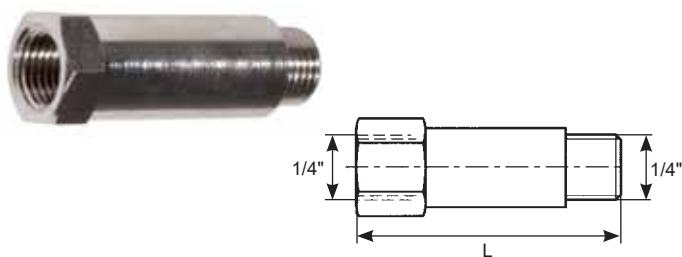
G	Prod-No	Art-No
R 3/8"	<b>290.1010</b>	650716
R 1/2"	<b>290.1011</b>	650717

**Reduziernippel / Raccord de réduction**



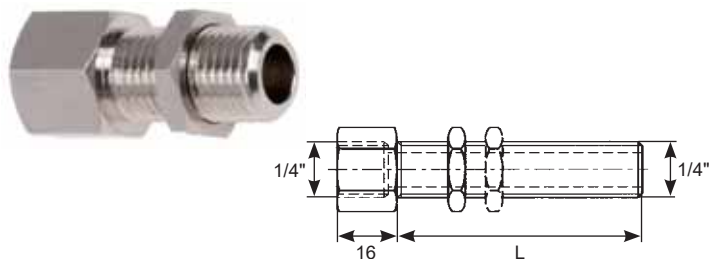
G	Prod-No	Art-No
R 1/8"	<b>290.1020</b>	650718
R 1/4"	<b>290.1021</b>	650719
UNF 1/4"	<b>290.1501 INOX</b>	650825 n)
M6	<b>290.1500 INOX</b>	650824 n)
M6	<b>290.1022</b>	650720
M8	<b>290.1023</b>	650721
M8 x 1	<b>290.1024</b>	650722
M10	<b>290.1025</b>	650723
M10 x 1	<b>290.1026</b>	650724
M12	<b>290.1027</b>	650725
M12 x 1,5	<b>290.1028</b>	650726

**Verlängerung / Rallonge**



L mm	Prod-No	Art-No
35	<b>290.1040</b>	650727
50	<b>290.1041</b>	650728

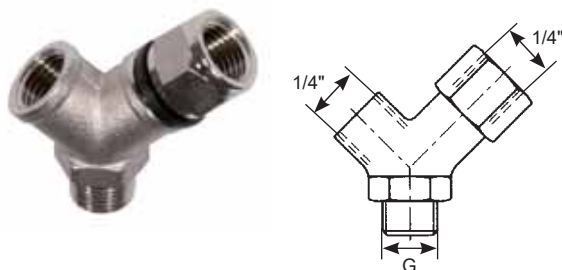
**Schottverschraubung / Raccord passe cloison**



L mm	Prod-No	Art-No
25	<b>290.1045</b>	650729
60	<b>290.1046</b>	650730

25 mm; inkl. 1 Mutter / *incl. une écrou*  
60 mm; inkl. 2 Muttern / *incl. deux écrous*

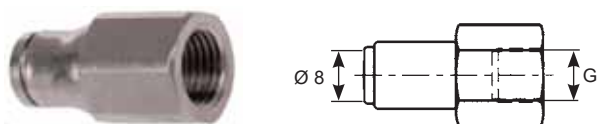
**Y-Anschluss-Stück / Raccord Y**



G	Prod-No	Art-No
R 1/4"	<b>290.1050</b>	650731

enthält Reduziernippel 1021  
*contient raccord de réduction 1021*

**Steckverschraubung / Raccord à emboîter**

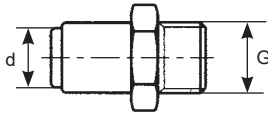


G	Prod-No	Art-No
R 1/4"	<b>290.1060</b>	650732

für Schlauch: Ø 8 mm  
*pour tuyau: Ø 8 mm*

Zubehör zu Simalube  
Accessoires Simalube

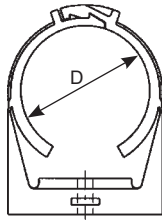
Steckverschraubung / *Raccord à emboîter*



G	d mm	Prod-No	Art-No
R 1/4"	8	<b>290.1071</b>	650733
R 1/8"	8	<b>290.1070</b>	650734
R 3/8"	8	<b>290.1072</b>	650735

für Schlauch: Ø 8 mm  
pour tuyau: Ø 8 mm

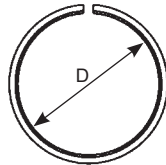
Halteschelle für Simalube / *Bride de fixation pour simalube*



D mm	Prod-No	Art-No
50	<b>290.2010</b>	650736

Material: Kunststoff  
matériel: plastique

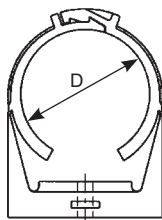
Adapter für Perma-Schelle / *Adaptateur de fixation Perma*



D mm	Prod-No	Art-No
50	<b>290.2012</b>	650737

Material: Kunststoff  
matériel: plastique

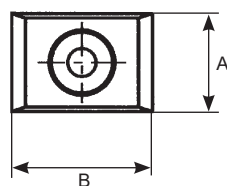
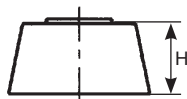
Halteschelle für Pinsel / *Bride de fixation pour pinceau*



D mm	Prod-No	Art-No
28	<b>290.2013</b>	650738

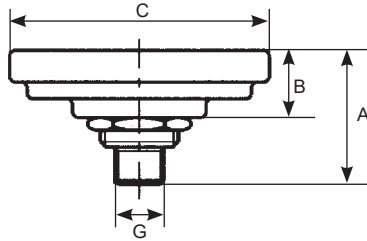
Material: Kunststoff  
matériel: plastique

Distanzhalter zu Halteschelle für Pinsel / *Entretoise pour bride de fixation pour pinceau*



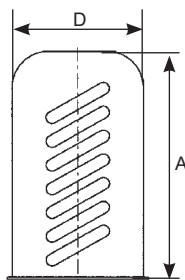
H mm	A mm	B mm	Prod-No	Art-No
15	20	30	<b>290.2014</b>	650739

**Montagesupport / Support de montage**



G	A mm	B mm	C Ø mm	Prod-No	Art-No
R 1/4"	36	18	70	<b>290.2080</b>	650740

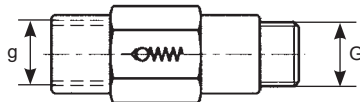
**Schutzhaube zu Montagesupport 2080 / Capot de protection pour support de montage 2080**



D mm	A mm	Prod-No	Art-No
50	103	<b>290.2081</b>	650741

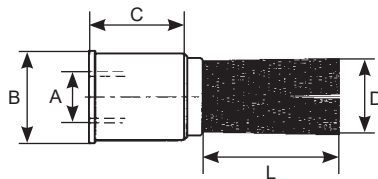
Material: Stahl  
matériel: acier

**Rückschlagventile / Clapets anti-retour**



g mm	G mm	Prod-No	Art-No
1/4"	R 1/8"	<b>290.2020</b>	650742
1/4"	R 1/4"	<b>290.2021</b>	650743

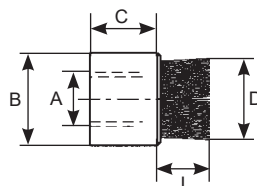
**Pinsel / Pinceau**



L x D mm	A mm	B mm	C mm	Prod-No	Art-No
25 x 45	1/4"	28	30	<b>290.2034</b>	650744

Kunststoff-Borsten  
poils en matière synthétique

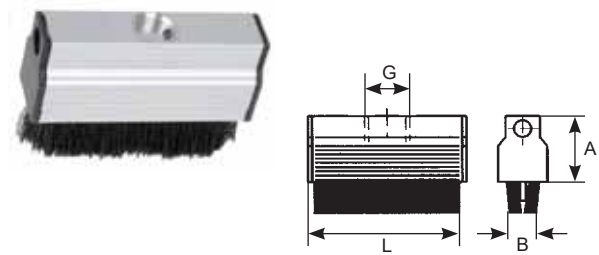
**Pinsel / Pinceau**



L x D mm	A mm	B mm	C mm	Prod-No	Art-No
25 x 15	1/4"	28	17	<b>290.2041</b>	650745

Rosshaar-Borsten  
poils en crin de cheval

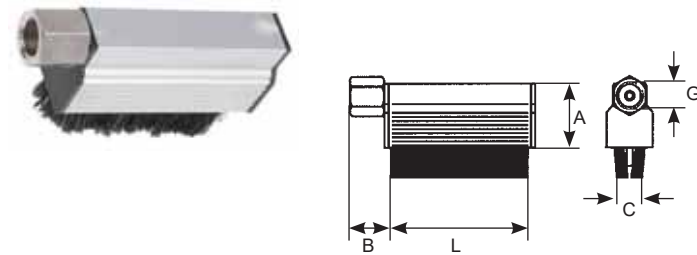
**Bürsten / Brosses**



G	L mm	A mm	B mm	Prod-No	Art-No
1/4"	25	31,5	23	<b>290.2038</b>	650746
1/4"	40	31,5	23	<b>290.2035</b>	650747
1/4"	70	31,5	23	<b>290.2036</b>	650748
1/4"	100	31,5	23	<b>290.2037</b>	650749

Rosshaar-Borsten  
*poils en crin de cheval*

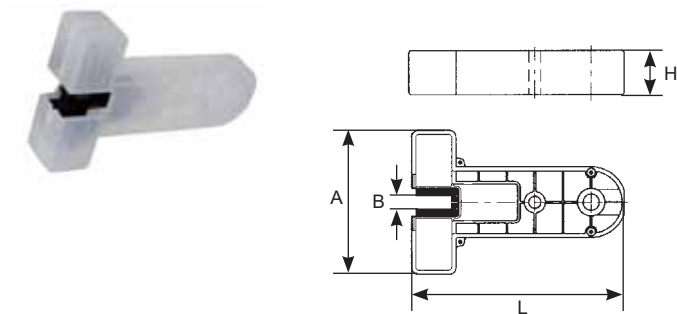
**Bürsten, Anschluss seitlich / Brosses, à connection latérale**



G	L mm	A x B mm	C mm	Prod-No	Art-No
1/4"	40	31,5 x 17,5	23	<b>290.2035-S</b>	650750
1/4"	70	31,5 x 17,5	23	<b>290.2036-S</b>	650751
1/4"	100	31,5 x 17,5	23	<b>290.2037-S</b>	650752

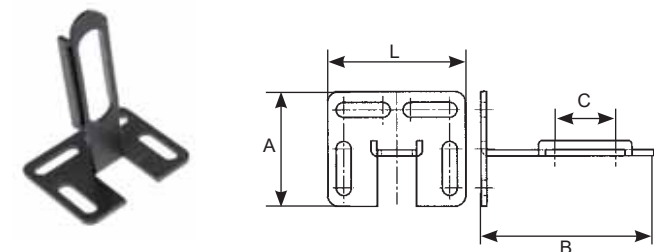
Rosshaar-Borsten  
*poils en crin de cheval*

**Aufzugsbürsten / Brosses pour ascenseurs**



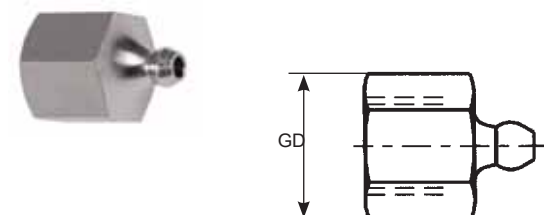
H mm	L mm	A mm	B mm	Prod-No	Art-No
31,5	151	102	5 - 16	<b>290.2039</b>	650753
31,0	113	84	5 - 16	<b>290.2042</b>	650754

**Support, universell verstellbar / Support réglage universel**



A mm	L mm	B mm	C mm	Prod-No	Art-No
50	60	84	35	<b>290.2800</b>	650755

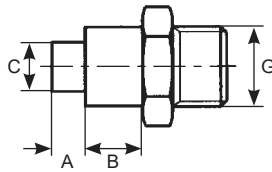
**Nachfüllnippel / Graisseur de recharge**



G	Prod-No	Art-No
R 1/4"	<b>290.3012</b>	650756

zum Nachfüllen des Simalube  
*pour la recharge du simalube*

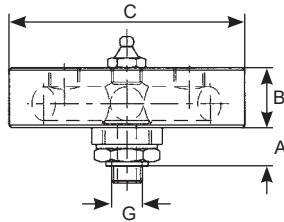
**Anschlussnippel / Raccords**



G	A mm	B mm	C Ø mm	Prod-No	Art-No
R 1/4"	6	10	7,8	<b>290.3013</b>	650757
R 3/8"	6	10	7,8	<b>290.3014</b>	650758

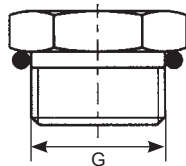
zum Befüllen des Simalube mit Fettpressenfüller  
pour appareil de remplissage de pompe à graisse

**4-fach Adapter / Adaptateurs quadruples**



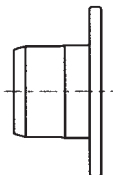
G	A mm	B mm	C Ø mm	Prod-No	Art-No
R 1/2"	16	25	100	<b>290.4100</b>	650759
R 1/4"	16	25	100	<b>290.4101</b>	650760

**Antriebsköpfe / Têtes de commande**



für Kartusche pour cartouche ml	Gewinde filetage G	Prod-No	Art-No
60	M18 x 1,5	<b>220.5006</b>	650761
125	M18 x 1,5	<b>220.5008</b>	650762

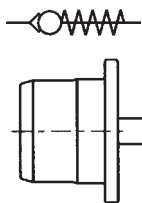
**Verschlussstopfen / Bouchon de fermeture**



Prod-No	Art-No
<b>290.5050</b>	650763

Material: Kunststoff  
matériel: plastique

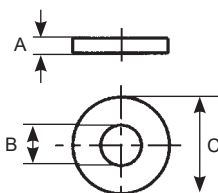
**Rückschlagventilstopfen / Bouchon anti-retour**



Prod-No	Art-No
<b>290.5060</b>	650764

Material: Kunststoff  
matériel: plastique

**Dichtungsring / Joint d'étanchéité**



A mm	B mm	C mm	Prod-No	Art-No
3	5	11,6	<b>290.5080</b>	650765