

Sonderausführungen Dreiweg-Umschalthähne L-Bohrung

KHB3KL-3P

3/2-Wege Kugelhahn Druckbeaufschlagung an allen Anschlüssen möglich, Umschaltfunktion

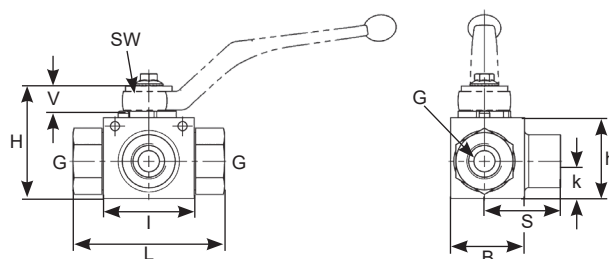
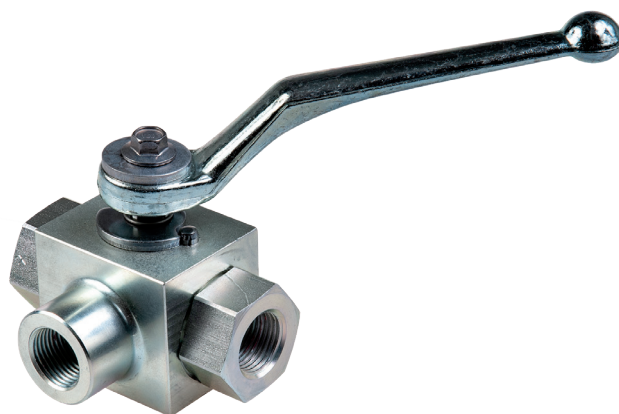
- Für den wechselweisen Betrieb von Hydraulik-Komponenten
- Umschaltbar rechts/links
- Schaltweg 90°
- Druckeingang 1, 2 und 3

Eigenschaften

- Anschluss G: **Innengewinde BSPP** (zylindrisch)
- Temperatur: **- 20 °C bis + 100 °C**
- Norm: **ISO 228**

Material:

- Körper: **Stahl**
 Kugel: **Stahl**
 Schaltwelle: **Stahl**
 Kugeldichtung: **POM**
 O-Ringe: **NBR**
 Hebel: **Zn, gekröpft** (DN 4 - DN 13)
Zn, gerade (DN 20 - DN 25)



DN	Gewinde G	L	l	B	H	h	k	S	V	SW	Betriebsdruck	Prod-No	Art-No
mm		mm	mm	mm	mm	mm	mm	mm	mm	mm	bar		
4	G1/8-28	69,0	40,0	29,0	47,0	33,0	13,0	34,5	11,0	9	500	KHB3KL3P-G1/8	497326
6	G1/4-19	69,0	40,0	29,0	47,0	33,0	13,0	34,5	11,0	9	500	KHB3KL3P-G1/4	497327
10	G3/8-19	72,0	43,0	35,0	52,0	38,0	16,0	36,0	11,0	9	500	KHB3KL3P-G3/8	497328
13	G1/2-14	83,0	48,0	38,0	54,0	40,0	17,5	41,5	11,0	9	315	KHB3KL3P-G1/2	497329
20	G3/4-14	95,0	62,0	52,0	75,0	57,0	24,5	47,5	14,0	14	315	KHB3KL3P-G3/4	497330
25	G1-11	113,0	66,0	61,0	83,0	65,0	29,0	56,5	14,0	14	315	KHB3KL3P-G1	497331

Sonderausführungen Dreiweg-Umschalthähne T-Bohrung

KHB3KT-3P

3/2-Wege Kugelhahn Druckbeaufschlagung an allen Anschlüssen möglich, Umschaltfunktion

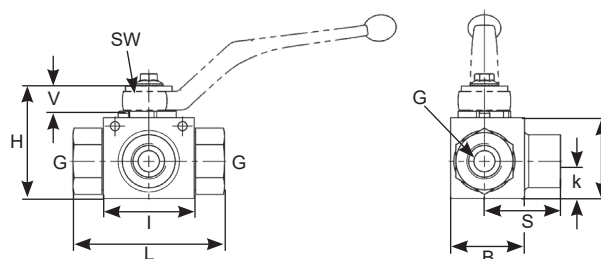
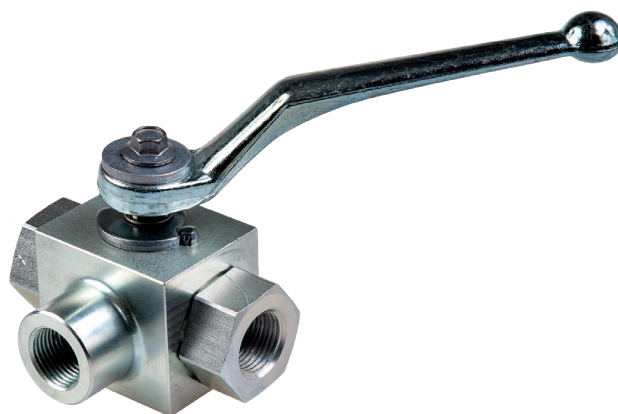
- Für den wechselweisen Betrieb von Hydraulik-Komponenten
- Umschaltbar rechts/links
- Schaltweg 90°
- Druckeingang 1, 2 und 3

Eigenschaften

- Anschluss G: **Innengewinde BSPP** (zylindrisch)
- Temperatur: **- 20 °C bis + 100 °C**
- Norm: **ISO 228**

Material:

- Körper: **Stahl**
 Kugel: **Stahl**
 Schaltwelle: **Stahl**
 Kugeldichtung: **POM**
 O-Ringe: **NBR**
 Hebel: **Zn, gekröpft** (DN 4 - DN 13)
Zn, gerade (DN 20 - DN 25)



DN	Gewinde G	L	I	B	H	h	k	S	V	SW	Betriebsdruck	Prod-No	Art-No
mm		mm	mm	mm	mm	mm	mm	mm	mm	mm	bar		
4	G1/8-28	69,0	40,0	29,0	47,0	33,0	13,0	34,5	11,0	9	500	KHB3KT3P-G1/8	497332
6	G1/4-19	69,0	40,0	29,0	47,0	33,0	13,0	34,5	11,0	9	500	KHB3KT3P-G1/4	497333
10	G3/8-19	72,0	43,0	35,0	52,0	38,0	16,0	36,0	11,0	9	500	KHB3KT3P-G3/8	497334
13	G1/2-14	83,0	48,0	38,0	54,0	40,0	17,5	41,5	11,0	9	315	KHB3KT3P-G1/2	497335
20	G3/4-14	95,0	62,0	52,0	75,0	57,0	24,5	47,5	14,0	14	315	KHB3KT3P-G3/4	497336
25	G1-11	113,0	66,0	61,0	83,0	65,0	29,0	56,5	14,0	14	315	KHB3KT3P-G1	497337

Versions spéciales

Robinet à trois voies

Alésage L

KHB3KL-3P

Robinet sphériques à trois voies entrée de pression à tous les raccords, fonction de commutation

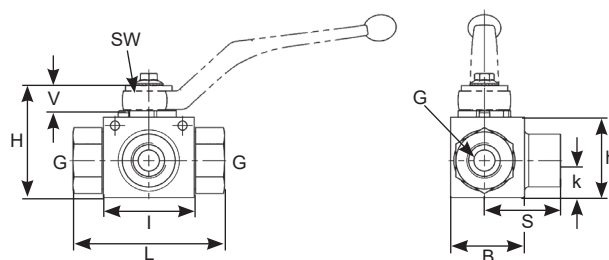
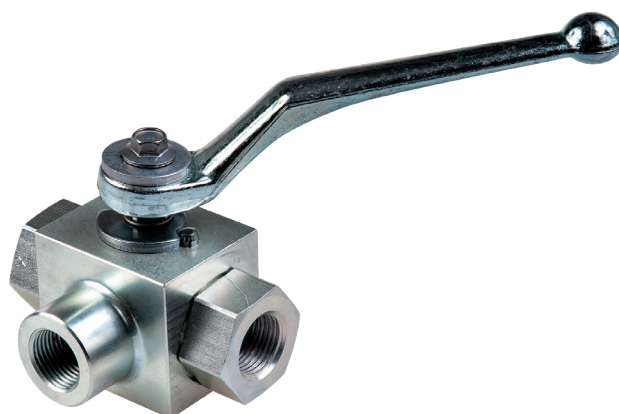
- Pour la mise en service alternative de composants hydrauliques
- Réversible gauche ou droite
- Réglage 90°
- Entrée de pression aux raccords 1, 2 ou 3

Caractéristiques

- Raccord G: **Filetage intérieur BSPP (cylindrique)**
- Température: **- 20 °C jusqu'à + 100 °C**
- Norme: **ISO 228**

Matériel:

- Corps: **Acier**
- Sphère: **Acier**
- Axe de sélection: **Acier**
- Joint: **POM**
- O-rings: **NBR**
- Levier: **Zn, coudé (DN 4 - DN 13)**
Zn, droit (DN 20 - DN 25)



DN mm	Filetage G	L mm	I mm	B mm	H mm	h mm	k mm	S mm	V mm	SW mm	Pression de service bar	Prod-No	Art-No
4	G1/8-28	69,0	40,0	29,0	47,0	33,0	13,0	34,5	11,0	9	500	KHB3KL3P-G1/8	497326
6	G1/4-19	69,0	40,0	29,0	47,0	33,0	13,0	34,5	11,0	9	500	KHB3KL3P-G1/4	497327
10	G3/8-19	72,0	43,0	35,0	52,0	38,0	16,0	36,0	11,0	9	500	KHB3KL3P-G3/8	497328
13	G1/2-14	83,0	48,0	38,0	54,0	40,0	17,5	41,5	11,0	9	315	KHB3KL3P-G1/2	497329
20	G3/4-14	95,0	62,0	52,0	75,0	57,0	24,5	47,5	14,0	14	315	KHB3KL3P-G3/4	497330
25	G1-11	113,0	66,0	61,0	83,0	65,0	29,0	56,5	14,0	14	315	KHB3KL3P-G1	497331

Versions spéciales

Robinet à trois voies

Alésage T

KHB3KL-3P

Robinet sphériques à trois voies entrée de pression à tous les raccords, fonction de commutation

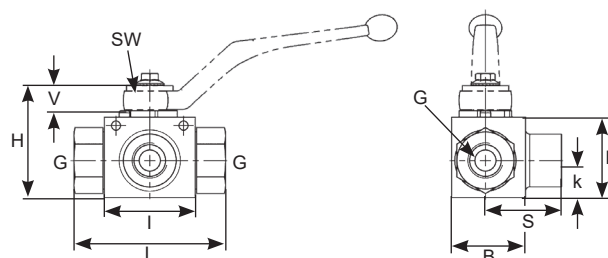
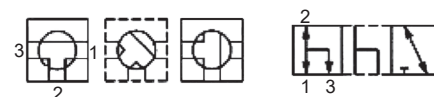
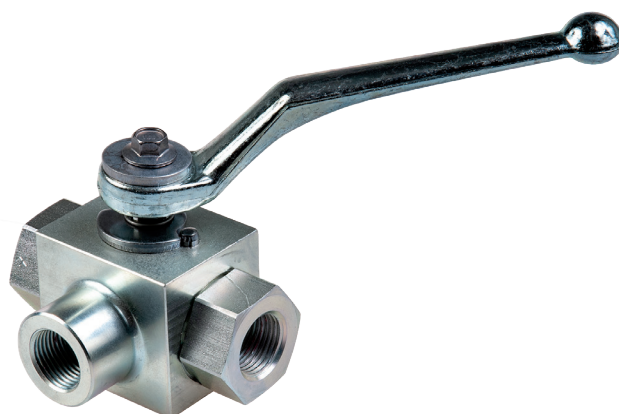
- Pour la mise en service alternative de composants hydrauliques
- Réversible gauche ou droite
- Réglage 90°
- Entrée de pression aux raccords 1, 2 ou 3

Caractéristiques

- Raccord G: **Filetage intérieur BSPP (cylindrique)**
- Température: **- 20 °C jusqu'à + 100 °C**
- Norme: **ISO 228**

Matériel:

- Corps: **Acier**
 Sphère: **Acier**
 Axe de sélection: **Acier**
 Joint: **POM**
 O-rings: **NBR**
 Levier: **Zn, coudé (DN 4 - DN 13)**
Zn, droit (DN 20 - DN 25)



DN	Filetage G	L	I	B	H	h	k	S	V	SW	Pression de service bar	Prod-No	Art-No
mm		mm	mm	mm	mm	mm	mm	mm	mm	mm			
4	G1/8-28	69,0	40,0	29,0	47,0	33,0	13,0	34,5	11,0	9	500	KHB3KT3P-G1/8	497332
6	G1/4-19	69,0	40,0	29,0	47,0	33,0	13,0	34,5	11,0	9	500	KHB3KT3P-G1/4	497333
10	G3/8-19	72,0	43,0	35,0	52,0	38,0	16,0	36,0	11,0	9	500	KHB3KT3P-G3/8	497334
13	G1/2-14	83,0	48,0	38,0	54,0	40,0	17,5	41,5	11,0	9	315	KHB3KT3P-G1/2	497335
20	G3/4-14	95,0	62,0	52,0	75,0	57,0	24,5	47,5	14,0	14	315	KHB3KT3P-G3/4	497336
25	G1-11	113,0	66,0	61,0	83,0	65,0	29,0	56,5	14,0	14	315	KHB3KT3P-G1	497337