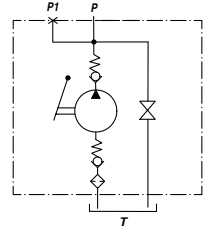
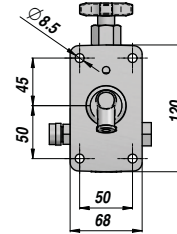
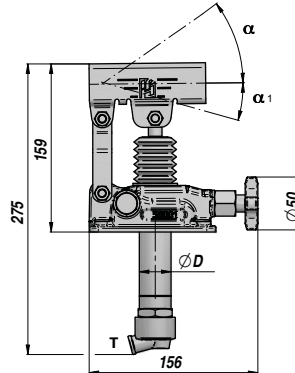
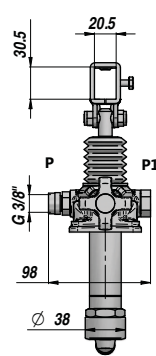
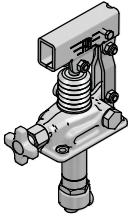


PAM-TS

HANDPUMPE MIT ABLASSHAHN HAND PUMP WITH LOWERING VALVE

MIT TANKEINRICHTUNG
SUITABLE FOR OIL TANK



Bestell-Nr. Code	Typ Type	cm ³ /hub cm ³ /cycle	P MAX bar	ØD	α	α ₁	Temperaturbereich Working Temperature	kg
211244	PAM-TS 12	12	380	30	37°	13°		2,89
211246	PAM-TS 25	25	350	35	57°	15°	-20°C +80°C	2,99
211248	PAM-TS 45	42	280	40	52°	28°		3,12

DW Handpumpe für EW Zylinder - Double-stroke for a S.A. cylinder

AUF ANFRAGE - ON REQUEST:

PAMX-TS = HANDPUMPE MIT TRÄGER FÜR RUNDEN HEBEL - HAND PUMP WITH ROUND LEVER HOLDER

FPM = DICHTSÄTZE IN VITON - VITON SEALS

VMQ = DICHTSÄTZE IN FLUORSILIKON - FLUORINE-SILICONE SEALS

Die Handpumpe wird mit Befestigungsschrauben und NBR-Dichtung geliefert. - Hand Pump is supplied with fastening screws and NBR seal.

HEBEL - LEVERS

Artikel-Nr. Code	Größe Sizes	TYPE	kg
211252	20 x 30 x 600	1	0,71

